

---

Subject: WTB Case Back for Ladies Pan Am  
Posted by [koskid](#) on Tue, 03 Dec 2024 22:50:12 GMT  
[View Forum Message](#) <> [Reply to Message](#)

---

Hello,

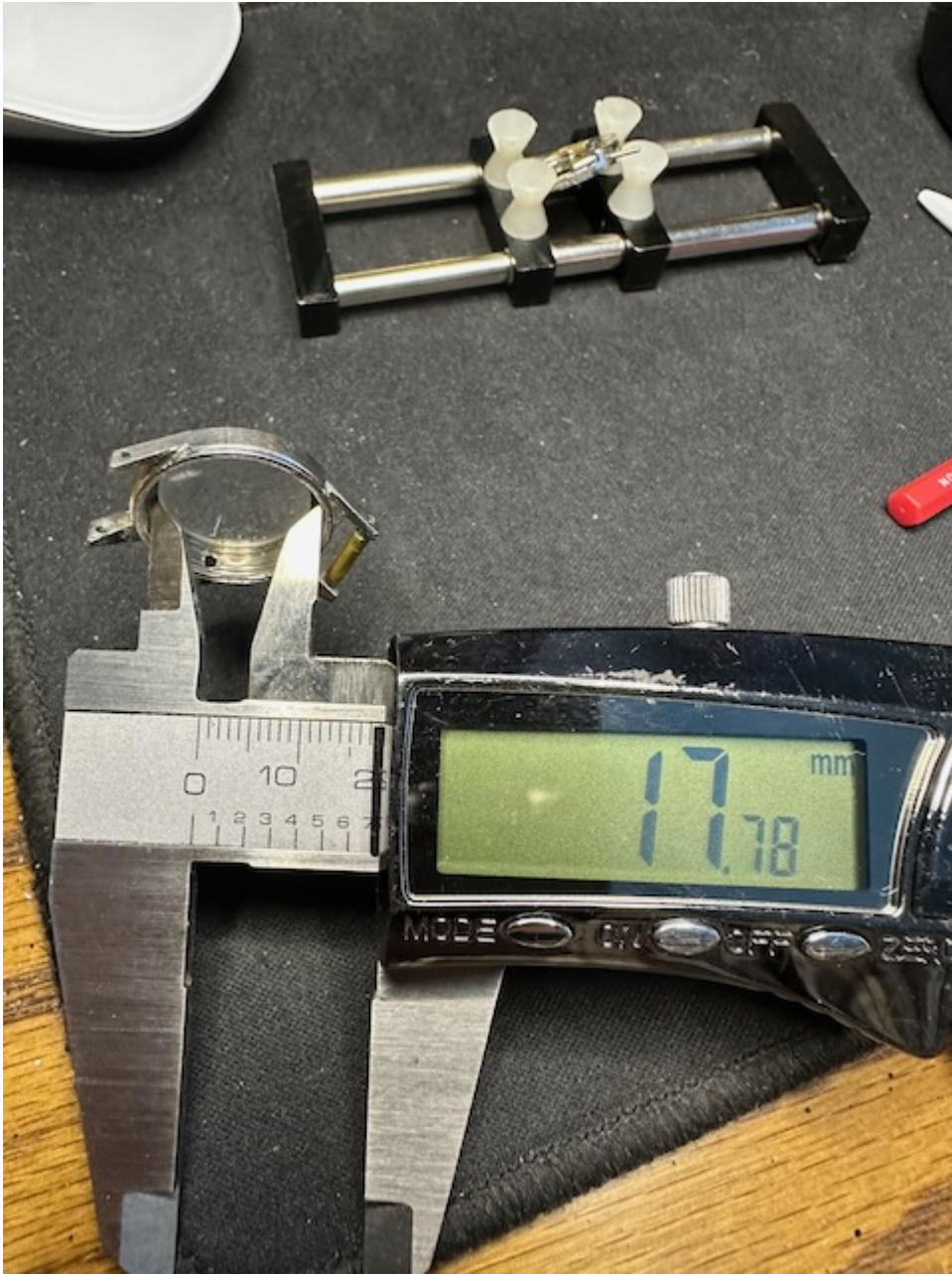
I found a Ladies Pan Am buried in my box of watches in need of repair. It's missing the case back and I wonder if anyone has a Guildite case baok that would fit this watch they are willing to sell.

This watch has a 210SS movement that had a broken staff, but I've taken care of that already. A couple of photos showing case dimensions are attached.

---

### File Attachments

1) [IMG\\_9534.jpeg](#), downloaded 1535 times



2) [IMG\\_9535.jpeg](#), downloaded 1537 times



3) [IMG\\_9536.jpeg](#), downloaded 1531 times



---

Subject: Re: WTB Case Back for Ladies Pan Am  
Posted by [koskid](#) on Thu, 05 Dec 2024 19:06:27 GMT  
[View Forum Message](#) <> [Reply to Message](#)

Turns out this is not a Pan Am after all. I should have done more research. It looks like an Import 259 as Jenneke noted some years ago.

Nevertheless I have found a Guildite case back to fit and have completed servicing the movement.

Movement is a 210SS. Replaced the balance from a donor and installed a new stem. Otherwise

it's running well and keeping time.

## File Attachments

---

1) [IMG\\_9539.jpeg](#), downloaded 1493 times



2) [IMG\\_9538.jpeg](#), downloaded 1493 times



---

Subject: Re: WTB Case Back for Ladies Pan Am  
Posted by [Jenneke](#) on Thu, 05 Dec 2024 22:20:53 GMT  
[View Forum Message](#) <> [Reply to Message](#)

Nice that you saved a ladies! I find these models misleadingly small. My dials look way worse too

---

Subject: Re: WTB Case Back for Ladies Pan Am  
Posted by [JackW](#) on Sat, 07 Dec 2024 14:17:16 GMT  
[View Forum Message](#) <> [Reply to Message](#)

Hi,  
Glad you got a back. Earlier this year I acquired one of these lady's watches, and have discerned that there are two styles of them that are similar. Can you show the back on yours? I'm also curious on your movement serial number. I'll post a photo of the one I got in a new thread.

Subject: Re: WTB Case Back for Ladies Pan Am  
Posted by [koskid](#) on Mon, 16 Dec 2024 18:32:01 GMT  
[View Forum Message](#) <> [Reply to Message](#)

---

The movement serial number is 11-25349. Attached are photos of the Guildite back I got for the watch.

### File Attachments

---

1) [IMG\\_9556.jpeg](#), downloaded 1430 times



2) [IMG\\_9555.jpeg](#), downloaded 1423 times



---

Subject: Re: WTB Case Back for Ladies Pan Am  
Posted by [JackW](#) on Mon, 16 Dec 2024 18:49:12 GMT  
[View Forum Message](#) <> [Reply to Message](#)

Then I would say that the case back and the movement serial are in alignment with the watch Jenneke shared, more than mine or Barney's