
Subject: Gruen "Wristlet" Watch Box

Posted by [Ephemerald](#) on Fri, 29 Oct 2021 20:39:10 GMT

[View Forum Message](#) <> [Reply to Message](#)

Description: ok, trying to catalog more of my boxes for the box ppl.

I would describe this as light olive green leather over wood.

I'd appreciate any feedback and expertise on putting a date to this box

Period:1912- 1922?

Watch type: Wristlet.

Size: the usual, but tall.

Inventor:

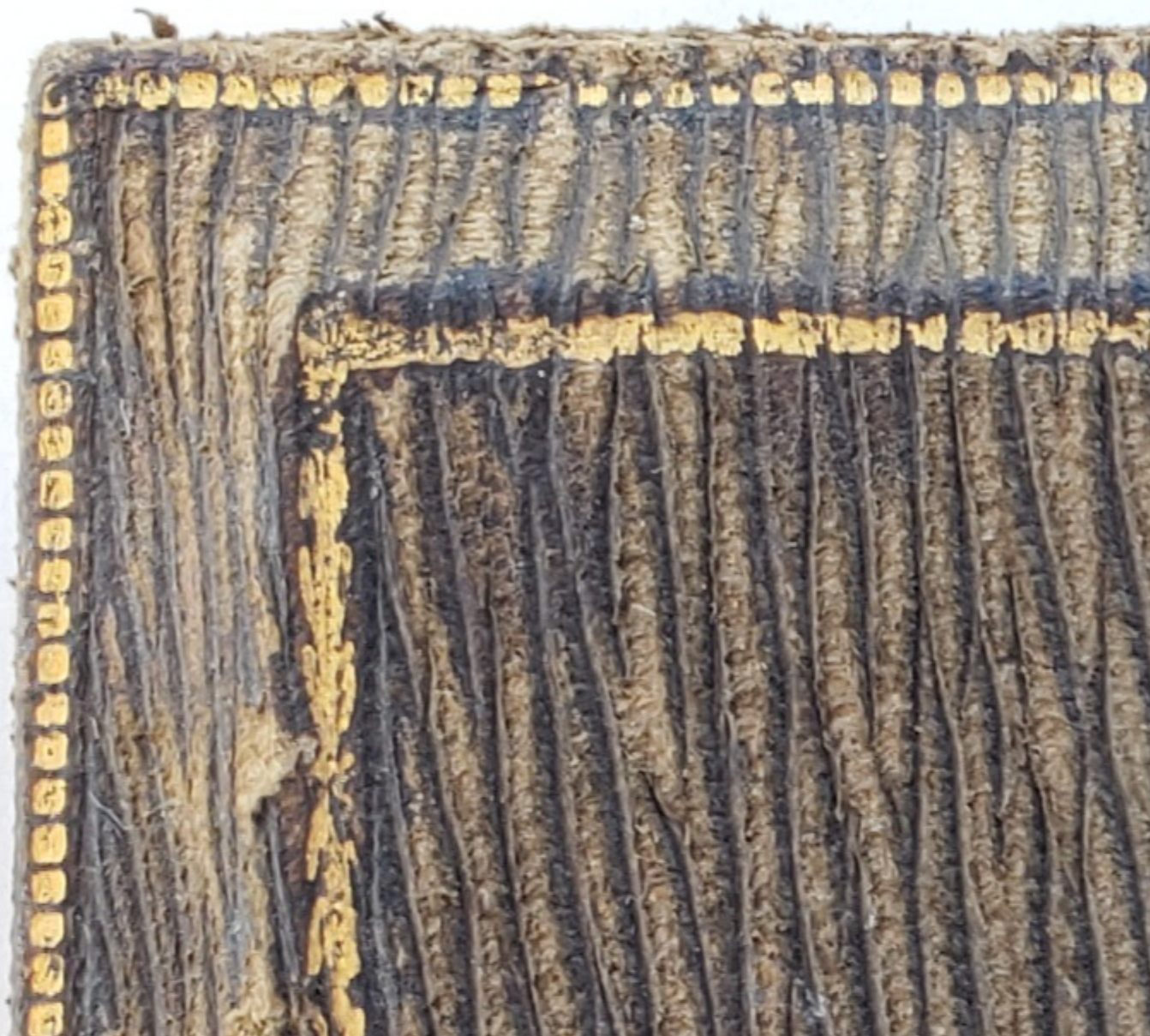
Patents:

Box maker:

.

File Attachments

1) [20211029_132407.jpg](#), downloaded 2195 times



2) [20211029_132518.jpg](#), downloaded 2170 times



3) [20211029_133010.jpg](#), downloaded 2241 times



4) [20211029_132952.jpg](#), downloaded 2191 times



5) [20211029_132934.jpg](#), downloaded 2172 times



Subject: Re: Gruen "Wristlet" Watch Box
Posted by [Ephemerald](#) on Fri, 29 Oct 2021 20:42:04 GMT
[View Forum Message](#) <> [Reply to Message](#)

Gruen "Wristlet" Watch inserts are in boxes from teens (mostly 1915-1916) but I will show the one box that is the closest general match from McClures November 1915.

Ad from Thorpe & Company. Founded in 1900. Dissolved in 2021.

File Attachments

1) [20211028_172947.jpg](#), downloaded 1732 times



2) [20211021_225631.jpg](#), downloaded 1724 times



Gruen Cartouche, \$50
Others, \$35 to \$250

Graduation Day

means a

GRUEN WRIST WATCH

or a

DIAMOND RING

Thorpe & Company

"Sioux City's Leading Jewellers"

509 Fourth Street

Subject: Re: Gruen "Wrislet" Watch Box
Posted by [Jenneke](#) on Fri, 29 Oct 2021 22:00:17 GMT
[View Forum Message](#) <> [Reply to Message](#)

I have seen that watch holder in a 1916 ad with a convertible ("wristlet"). Imo you are in the correct period. No Gruen crest yet. Brown velvet. And a pusher to open/close the box.

And... no patented or patents pending (other gold rim)

Subject: Re: Gruen "Wrislet" Watch Box
Posted by [Ephemerald](#) on Fri, 29 Oct 2021 22:50:07 GMT
[View Forum Message](#) <> [Reply to Message](#)

Ok, thanks! Yup, there are these images of Gruen Wrislet Watch inserts from 1916. But I have yet to see a box in an advertisement that matches my box exactly. My insert is not removable. Good to know I'm in the ballpark. The 1912 boxes have similarities to mine but the inserts are quite different. So what was the colour of velvet in the wristlet boxes before brown?

File Attachments

1) [20211029_164033.jpg](#), downloaded 1686 times



GRUEN Wristlet Watch

The **GRUEN**
"Octathin" Wristlet
A watch of real distinction

Striking in its beauty, different, yet withal the embodiment of dignified design and quiet good taste.

The reputation for precision timekeeping won by the Gruen Watch is your guarantee of time-keeping qualities in this finely-jeweled, adjusted model.

In gold-filled 25-yr. case this stylish "Octathin" Wristlet is an exceptional value at \$25. Go see it at leading jewelers in your city. Should they be out of it, write us, mentioning your jeweler's name, and we will arrange for you to see it. Write for beautifully illustrated folder of other Gruen Wristlet and Sautoir models, \$25 to \$250.

2) [20211029_163922.jpg](#), downloaded 1701 times



WOMEN Wristlet Watch

Subject: Re: Gruen "Wrislet" Watch Box
Posted by [Case](#) on Sat, 30 Oct 2021 03:08:23 GMT
[View Forum Message](#) <> [Reply to Message](#)

I think 14-15 is the range. 1913 ads through end of year show same box as 1912 —and labeling on outside. No box pics from 1914, but the insert in that Nov 1915 ad box seems a next evolution from yours.

Subject: Re: Gruen "Wrislet" Watch Box
Posted by [Jenneke](#) on Sat, 30 Oct 2021 06:48:37 GMT
[View Forum Message](#) <> [Reply to Message](#)

I am not sure, but think all the brown inserts were fixed.

The color before (or after)... might be greyish/taupe color. See my convertible wristlet box. And the unusual afire box.
