

---

Subject: Quadron service box

Posted by [Thojil](#) on Sat, 26 Dec 2020 20:33:38 GMT

[View Forum Message](#) <> [Reply to Message](#)

---

#### Description

Two-tone hinged wooden box. The lid is covered in dark red fake leather with an Art-Deco style gold embossed emblem. The main body of the box is covered in brown fake leather material with gold printed borders.

Inside the lid has off-white silk, showing text "Gruen Quadron", the Gruen crest and "17 Jewels PRECISION"

The insert holding the watch is missing and I also have no idea what it should look like. Please add a picture if anybody has the info. I can then get creative like Jenneke and try to reproduce it :lol:

Period : 1925 - 1930?

Watch type : Mens wrist watch

Size : L=13cm W=9cm H =5.5cm

Inventor : Unknown

Patents : Unknown

Box maker : Unknown

---

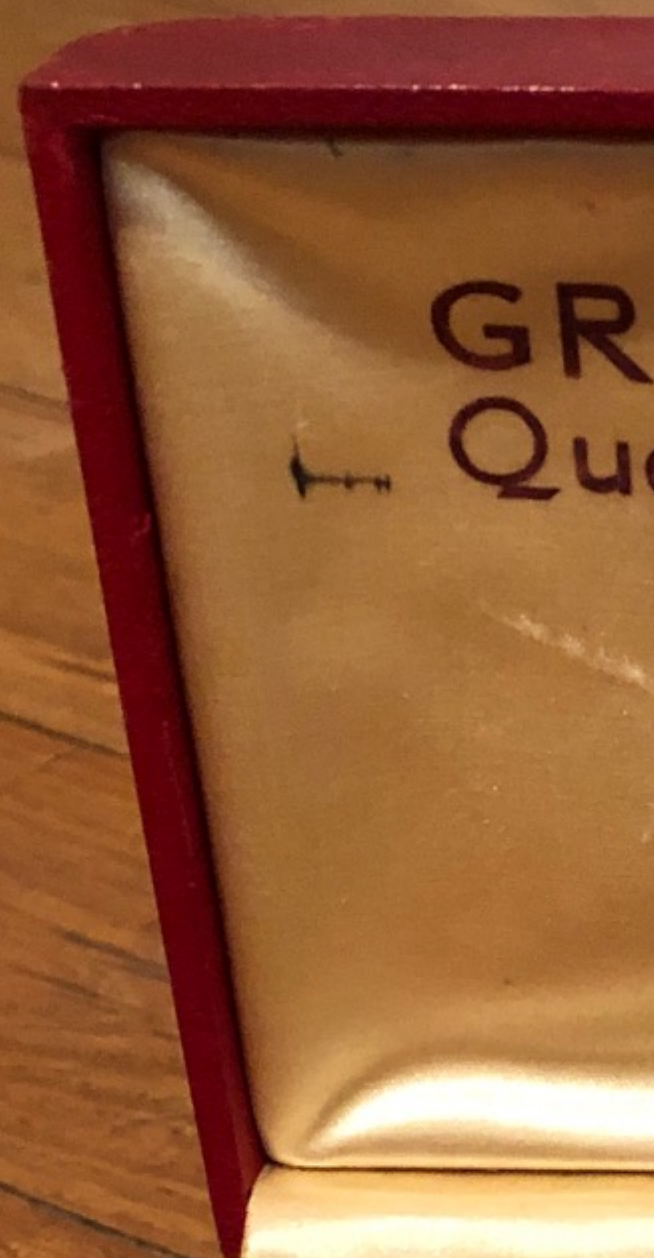
#### File Attachments

1) [3DDD8E15-8C80-40D3-B395-87894E3024CA.jpeg](#), downloaded 2422 times



2) [16DDBD43-2741-4EED-AF1B-D64F91DF39A8.jpeg](#), downloaded 2433 times





3) [ECB64E05-F656-40F4-8F86-E83255010C0D.jpeg](#), downloaded 2446 times





Subject: Re: Quadron service box  
Posted by [Jenneke](#) on Sun, 27 Dec 2020 08:37:51 GMT  
[View Forum Message](#) <> [Reply to Message](#)

---

Nice! Never seen one. Wood inside. That gold emblem. Very unusual.

The hight of the box makes me think it had two layers.

No marking on the bottom?

---

---

Subject: Re: Quadron service box  
Posted by [Thojil](#) on Sun, 27 Dec 2020 09:49:12 GMT  
[View Forum Message](#) <> [Reply to Message](#)

---

Unfortunately no markings at all that could provide a clue.

Agree that the insert could have been in two layers. I have seen examples of that with ladies watches.

---

---

Subject: Re: Quadron service box  
Posted by [Thojil](#) on Sun, 27 Dec 2020 11:17:37 GMT  
[View Forum Message](#) <> [Reply to Message](#)

---

Being a more elaborate box versus the Quadron marked boxes I've seen so far, I hope I can link this one to my Quadron 3

---

---

Subject: Re: Quadron service box  
Posted by [Ephemerald](#) on Sun, 27 Dec 2020 17:00:42 GMT  
[View Forum Message](#) <> [Reply to Message](#)

---

This is the quadron box that is lined with cedar, it came with paper instructions suggesting that the box double as a perfect humidor for tobacco-that's why it's so tall. I'm looking for the photos but not positive I can find today but notes say it was from 1931 and a the watch had a gilded 123.

---

---

Subject: Re: Quadron service box  
Posted by [Thojil](#) on Sun, 27 Dec 2020 21:22:41 GMT  
[View Forum Message](#) <> [Reply to Message](#)

---

Here you have it again, a simple explanation for something early Gruen marketeers creatively developed, but we would never have come up with not even in one of those wild brain storming sessions :lol: :lol:

---

Looking forward to the pictures when you have found them.

---

---

Subject: Re: Quadron service box  
Posted by [afire](#) on Mon, 28 Dec 2020 18:32:23 GMT  
[View Forum Message](#) <> [Reply to Message](#)

---

That's a new one to me. I've never seen a box specifically marked Quadron, just the paperwork. Ephemerald wrote on Sun, 27 December 2020 11:00This is the Quadron box that is lined with cedar, it came with paper instructions suggesting that the box double as a perfect humidor for tobacco-that's why it's so tall.

I guess tobacco tie-ins were a thing back in the day. Hamilton suggested using their pocket watch boxes as cigarette cases...

---

---

Subject: Re: Quadron service box  
Posted by [Thojil](#) on Mon, 28 Dec 2020 21:32:37 GMT  
[View Forum Message](#) <> [Reply to Message](#)

---

Great stuff, try that today :lol:

---