

---

Subject: The caliber 35

Posted by [thesnark17](#) on Mon, 17 Aug 2020 00:02:08 GMT

[View Forum Message](#) <> [Reply to Message](#)

---

Type : pocket watch

Period/date : 1900-1920

Gender : men's

Caliber : 35

Movement Maker : Gruen

Size: 12 size with spacer ring, 17" without

17 jewel variant

21 jewel variant

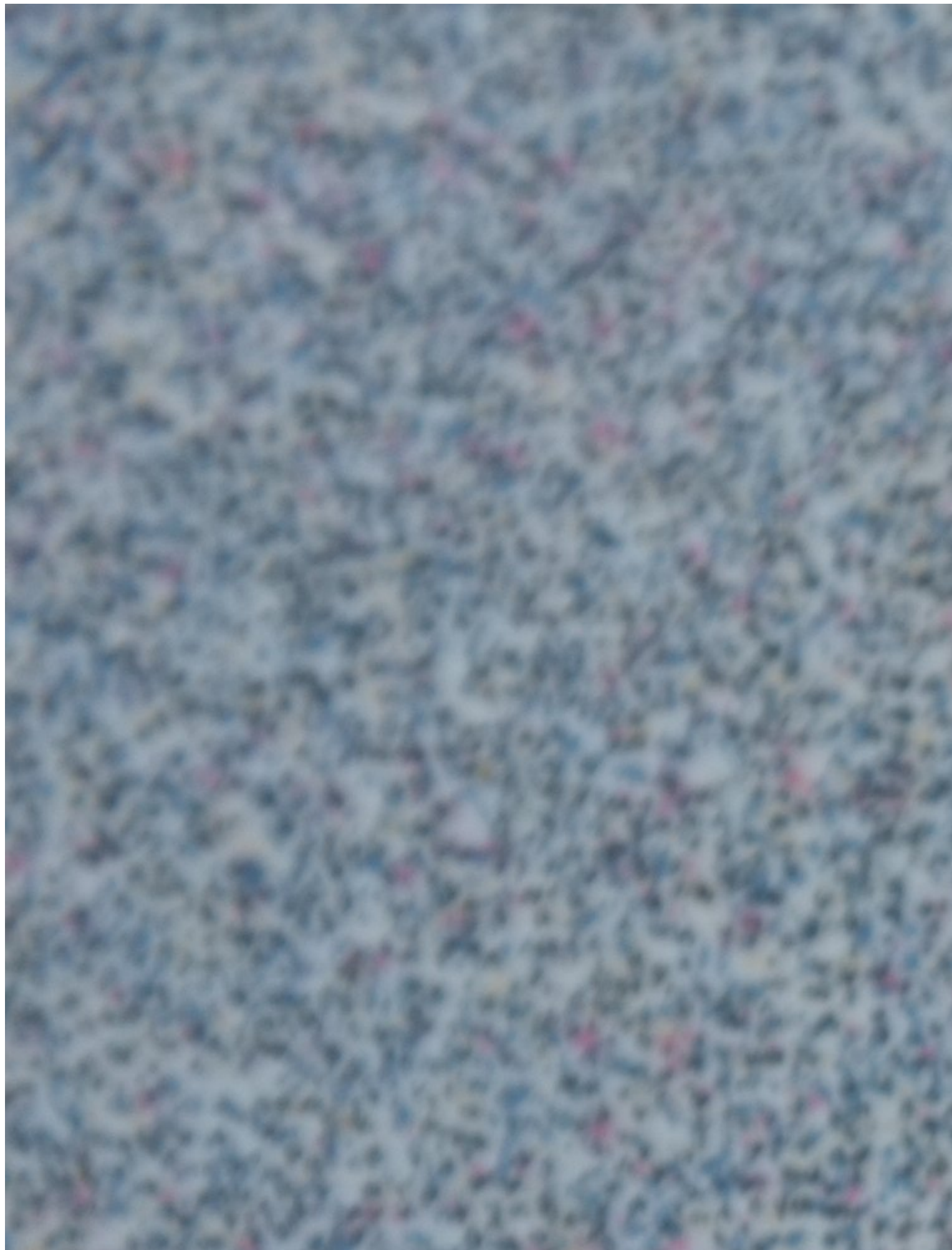
While the 17 jewel variant lacks the top-end chronometer balance and the 21 jewel has it, there exist 17 jewel variants with the top-end balance and 21 jewel variants without.

Whether there are different caliber numbers for the different jewel counts and configurations is for someone else to research. I call both of these "caliber 35" because that's what I was told they were, years ago. I have no documentation.

### File Attachments

---

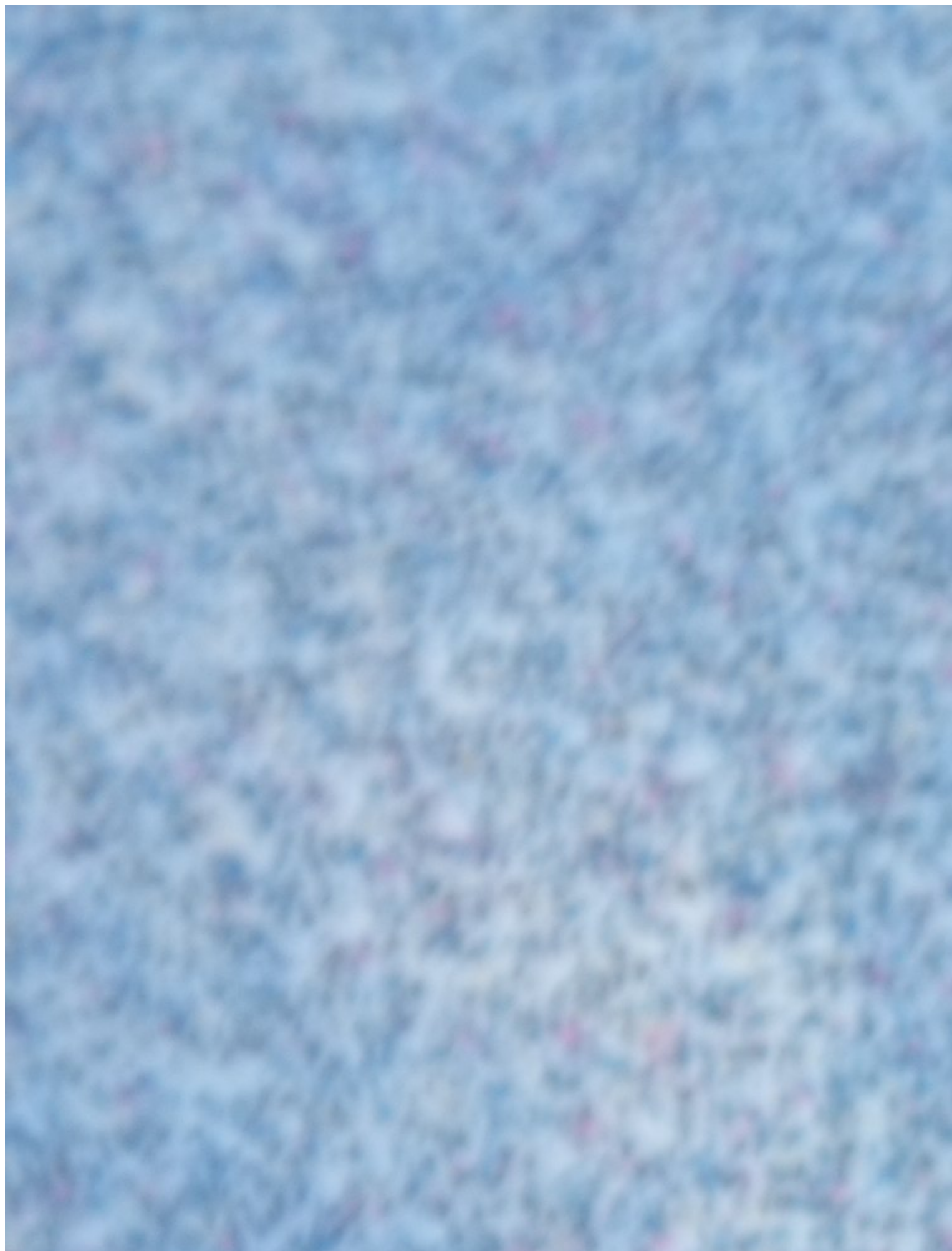
1) [cal 35 21j dial.jpg](#), downloaded 2241 times



2) [cal 35 spacer.jpg](#), downloaded 2226 times



3) [cal 35 21j.jpg](#), downloaded 2223 times



4) [cal 35 17j.jpg](#), downloaded 2223 times



151276

5) [cal 35 dial side.jpg](#), downloaded 2207 times



6) [cal 35 dial.jpg](#), downloaded 2204 times



Subject: Re: The caliber 35  
Posted by [Case](#) on Mon, 17 Aug 2020 13:37:52 GMT  
[View Forum Message](#) <> [Reply to Message](#)

---

Thanks to Gary for moving this over to the caliber database. Are they lever set or stem?

---

Subject: Re: The caliber 35  
Posted by [thesnark17](#) on Tue, 18 Aug 2020 00:29:35 GMT  
[View Forum Message](#) <> [Reply to Message](#)

---

They are both stem-set.

The 21 jewel watch is the best running Gruen I have. Unserviced and running with low amplitude, the delta across 5 positions was 7 seconds. I haven't run it in a couple of years... I still don't have the skills to be confident in servicing it as it deserves.

---

Subject: Re: The caliber 35  
Posted by [Case](#) on Tue, 18 Aug 2020 03:33:35 GMT  
[View Forum Message](#) <> [Reply to Message](#)

---

Wow, that is tight! Hopeful mine will perform like that.

---