
Subject: Baguette 306

Posted by [Ephemerald](#) on Sat, 08 Aug 2020 17:57:56 GMT

[View Forum Message](#) <> [Reply to Message](#)

Model name : Baguette 306.

Type : Baguette

Period/date : 1932

Gender : Ladies

Case Maker : GRUEN 5th AVE (likely K&O)

Case Material : 14k white gold, 2 diamonds.

Case Serial : 54658

Case Style no :

Caliber : 161

Movement Maker : Gruen Guild

Movement Serial: 29486

Bracelet : Harwood Sterling

Other info :.

.

.

.

.

File Attachments

1) [20200807_192717 \(2\).jpg](#), downloaded 1832 times



2) [20200808_111548.jpg](#), downloaded 1871 times

3) [20200807_192818.jpg](#), downloaded 1801 times



4) [20200807_192539.jpg](#), downloaded 1854 times



GRUEN

5TH

AVE

14K

54658

161

11-7-78

5) [20200807_192505.jpg](#), downloaded 1862 times



Subject: Re: Baguette 306
Posted by [Gary](#) on Sat, 08 Aug 2020 19:06:06 GMT
[View Forum Message](#) <> [Reply to Message](#)

Absolutely stunning Matt! Nice to have one from the gold shops, K&O no doubt!

I gotta get me one!

Subject: Re: Baguette 306
Posted by [Jenneke](#) on Sat, 08 Aug 2020 19:26:36 GMT
[View Forum Message](#) <> [Reply to Message](#)

Nice tiny one.

Is the movement a swapp? Or is the crystal disforming the dial... because the 6 seems partly inside the bezel.

Subject: Re: Baguette 306
Posted by [Ephemerald](#) on Sat, 08 Aug 2020 20:53:12 GMT
[View Forum Message](#) <> [Reply to Message](#)

Gary- for sure! I have a few from the shop that I'm documenting before they evaporate into the ether.

Jenneke-is it a swap? Probably but I don't mind that much as it happened before my time w the watch and is part of it's trip. I was told this watch was "sterling" from seller.

.

Gruen 5th Ave cases don't have Romans on the inside case bezel that match caseback but regular numbers. 658.

File Attachments

1) [20200808_143443.jpg](#), downloaded 1422 times



2) [20200808_143543.jpg](#), downloaded 1429 times



Subject: Re: Baguette 306

Posted by [Barney Green](#) on Sat, 08 Aug 2020 21:00:07 GMT

[View Forum Message](#) <> [Reply to Message](#)

Wow, like it a lot!

MR, my wifes initials...

Subject: Re: Baguette 306

Posted by [Ephemerald](#) on Sun, 09 Aug 2020 01:13:34 GMT

[View Forum Message](#) <> [Reply to Message](#)

Oh really? Cool!...maybe it's Destiny...

Hey, have you ever seen this model in any of your adventures w adverts?

Subject: Re: Baguette 306
Posted by [Jenneke](#) on Sun, 09 Aug 2020 06:58:20 GMT
[View Forum Message](#) <> [Reply to Message](#)

Ephemerald wrote on Sat, 08 August 2020 22:53 Probably but I don't mind that much as it happened before my time w the watch and is part of it's trip.
I agree! Was the seller able to give some history?

Quote:I was told this watch was "sterling" from seller.
Lol, lucky you

Subject: Re: Baguette 306
Posted by [Barney Green](#) on Sun, 09 Aug 2020 09:32:46 GMT
[View Forum Message](#) <> [Reply to Message](#)

No, this watch seem to have not been advertised. Other than its sisters Trouville, Mentone and Monticello which also have names in the Guild Book. So I would think that only the ones which had names were advertised, Baguette 306 has not been given a name.
BTW, it looks kin d of yellowish, but it is white gold, isn't it?

Subject: Re: Baguette 306
Posted by [Case](#) on Sun, 09 Aug 2020 19:16:10 GMT
[View Forum Message](#) <> [Reply to Message](#)

That happens with white gold, if worn regularly. My college ring is 14k white, and I had to have it touched up. Already showing a yellow tint after only 15 years.

Subject: Re: Baguette 306
Posted by [Jenneke](#) on Sun, 09 Aug 2020 19:28:15 GMT
[View Forum Message](#) <> [Reply to Message](#)

Interesting, did not know that. Explains the tint of one of my 14K watches. The previous owner must have loved it.

Subject: Re: Baguette 306
Posted by [Ephemerald](#) on Sun, 09 Aug 2020 19:50:05 GMT
[View Forum Message](#) <> [Reply to Message](#)

Yes. It is white gold.

I have ads for Avallon, Ostende, Longueville, Trouville, Normandie, Charleston, Ardennes, Mentone, Monticello, Lorraine, Chantilly, Lille, Falaise, Charenton from this period, 31-32, so it may be that the ad is not discovered yet, but may be that's my hope talking.

Subject: Re: Baguette 306

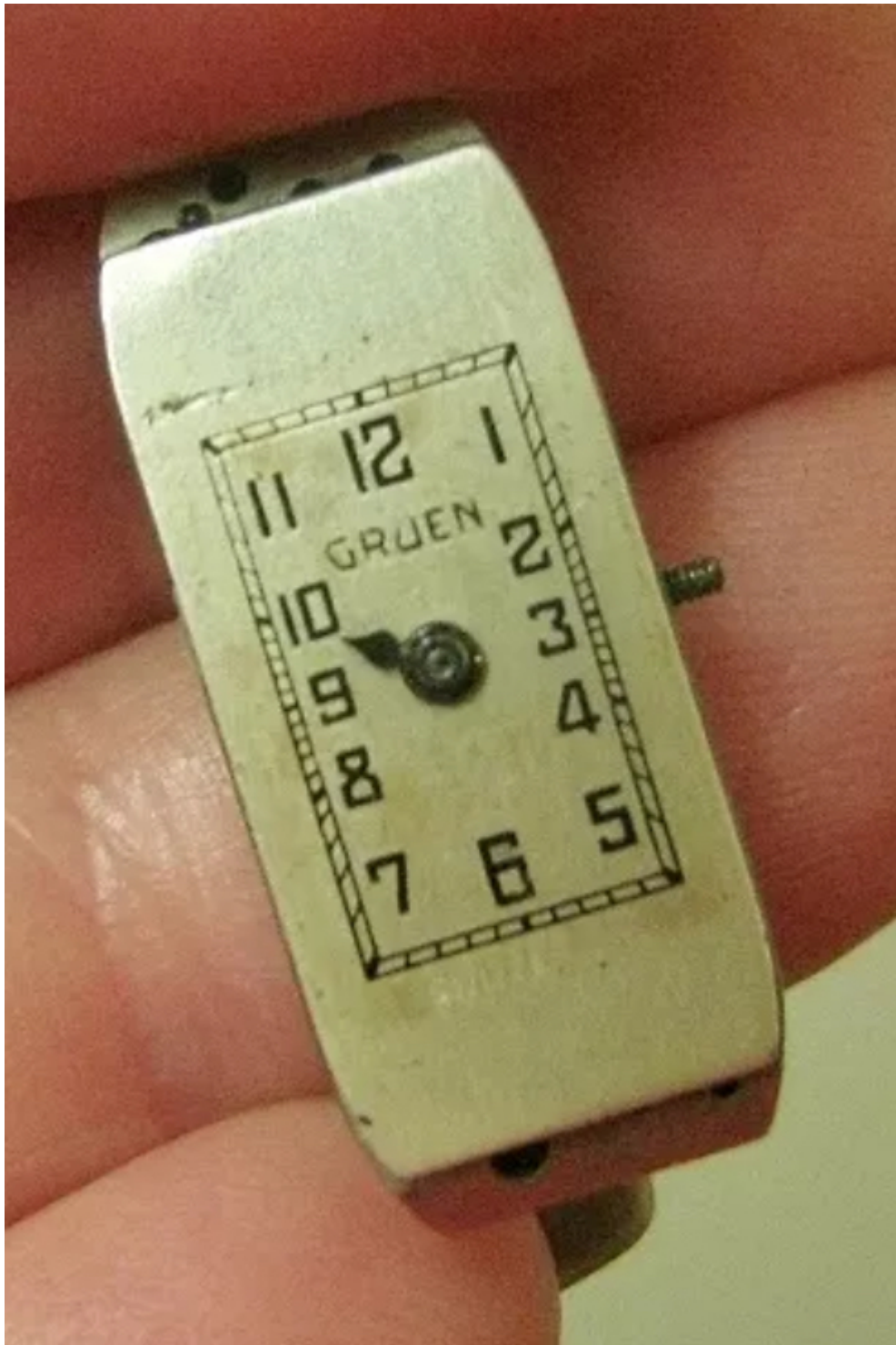
Posted by [Case](#) on Mon, 10 Aug 2020 14:44:53 GMT

[View Forum Message](#) <> [Reply to Message](#)

Maybe original dial like this? Also a 161 ca 1931.

File Attachments

1) [32C1D731-22E9-4007-8044-BCD66E2C1B4D.jpeg](#), downloaded 1345 times



Subject: Re: Baguette 306

Posted by [Barney Green](#) on Mon, 10 Aug 2020 16:29:11 GMT

[View Forum Message](#) <> [Reply to Message](#)

Yes, I have more Baguette names from that era, I just named the three because they were close sisters, also solid gold 2 diamond versions of the same time. The Mentone is Baguette 305 and

has been advertised frequently.
