
Subject: Raised Dial Markers on Quadron
Posted by [slinfiniti](#) on Sun, 16 Jun 2013 16:36:14 GMT
[View Forum Message](#) <> [Reply to Message](#)

I have attached pictures of a Quadron that I picked along the way. This dial is different from me because all the lettering / numbers are raised off the dial. I have not seen this in my short collection time. The middle of the dial seems to have a sterling silver insert as the finish / texture is different.

I would appreciate any help on this dial identification?

Happy Fathers Day to those dads who have so carefully crafted and nurtured the little people in their lives.

Model name : Gruen Precision
Type : Quadron
Period/date : 1930's
Gender : Mens

Case Maker : Pioneer
Case Material : Gold Filled
Case Serial : 75481
Case Style no :

Caliber : 123
Movement Maker : Gruen
Movement Serial:706445

Bracelet : N/A

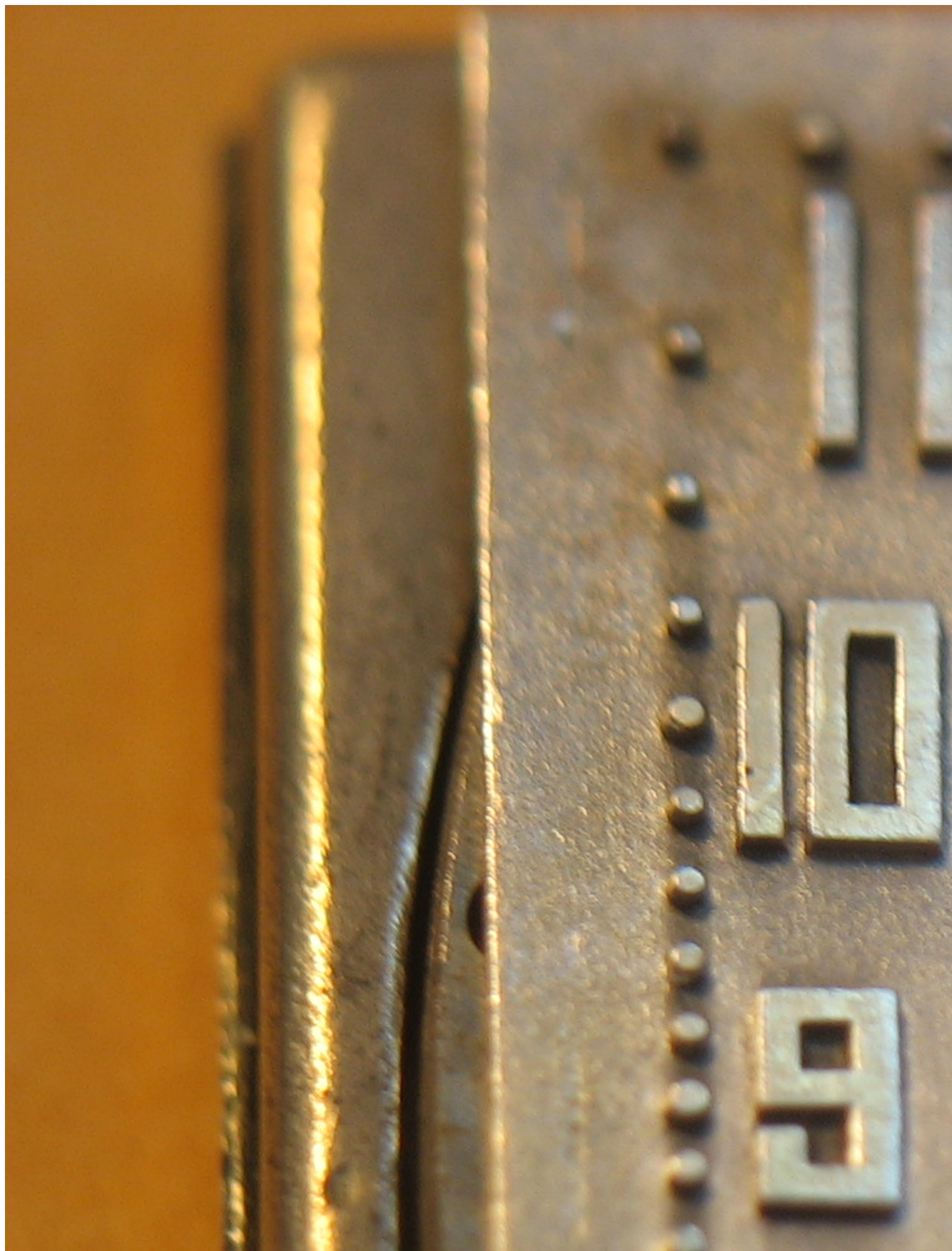
Other info :

File Attachments

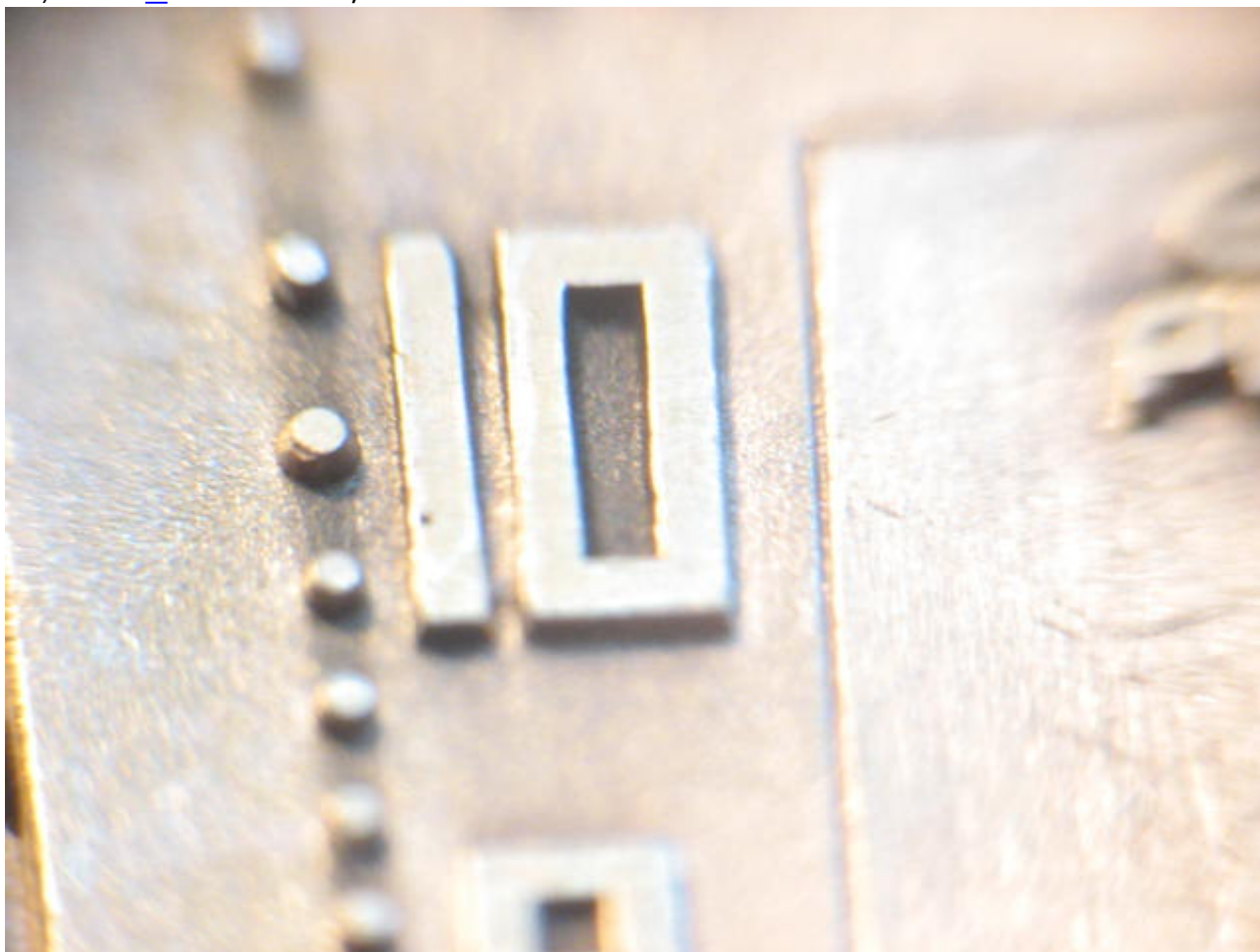
1) [IMG_1642.JPG](#), downloaded 1153 times

GR
PRE

2) [IMG_1647.JPG](#), downloaded 1120 times



3) [IMG_1645.JPG](#), downloaded 1146 times



Subject: Re: Raised Dial Markers on Quadron
Posted by [afire](#) on Mon, 17 Jun 2013 00:23:04 GMT
[View Forum Message](#) <> [Reply to Message](#)

I have a couple of these dials. Not sure what models they originally went with. But it originally would have had a printed seconds track.
