
Subject: Curvex Majesty (330)

Posted by [C. Hurt](#) on Tue, 04 Jun 2013 06:55:17 GMT

[View Forum Message](#) <> [Reply to Message](#)

Model name: Curvex Majesty (aka Curvex Colonel)

Type: 52 mm Curvex

Period/date: 1937-1940

Gender: Mens

Case Maker: Wadsworth

Case Material: 14K Gold-Filled

Case Serial: G0299xx

Case Style no: 330 292

Caliber: 330

Movement Maker: Gruen

Movement Serial:

Other info: Longest Curvex, at 52mm. Refinished dial.

Subject: Re: Curvex Majesty (330)

Posted by [artbissell](#) on Tue, 11 Jun 2013 05:36:18 GMT

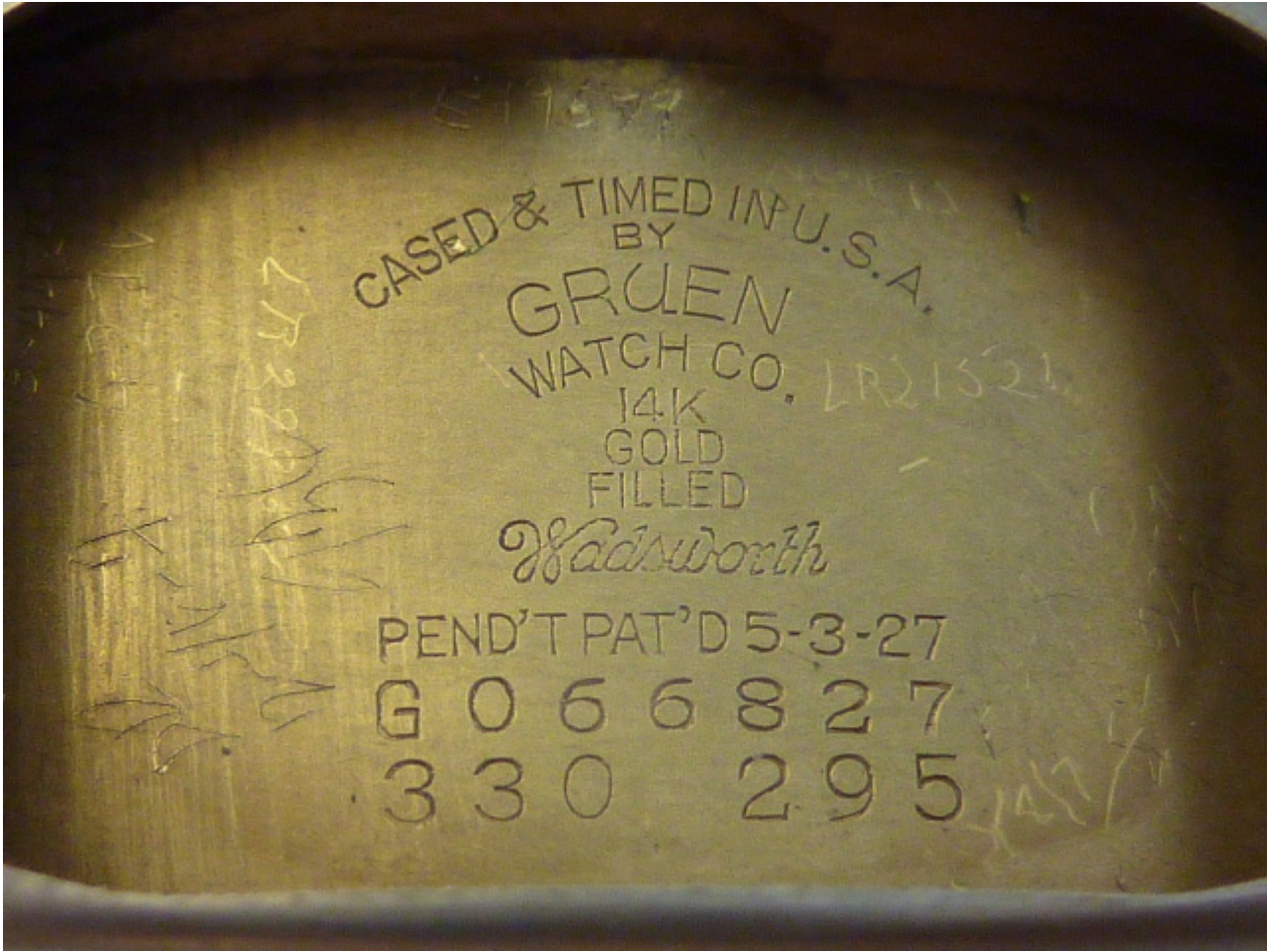
[View Forum Message](#) <> [Reply to Message](#)

Fine work and description. The 52mm similar appearing one I bought as Majesty model has identical appearance and numbers. Same Wadsworth case 330/295 is numbered G0668xx. Same movement. Same dial with big 6 under seconds scale. The outside surface of g.f. case does maybe seem a little thicker indicating a Peer model?

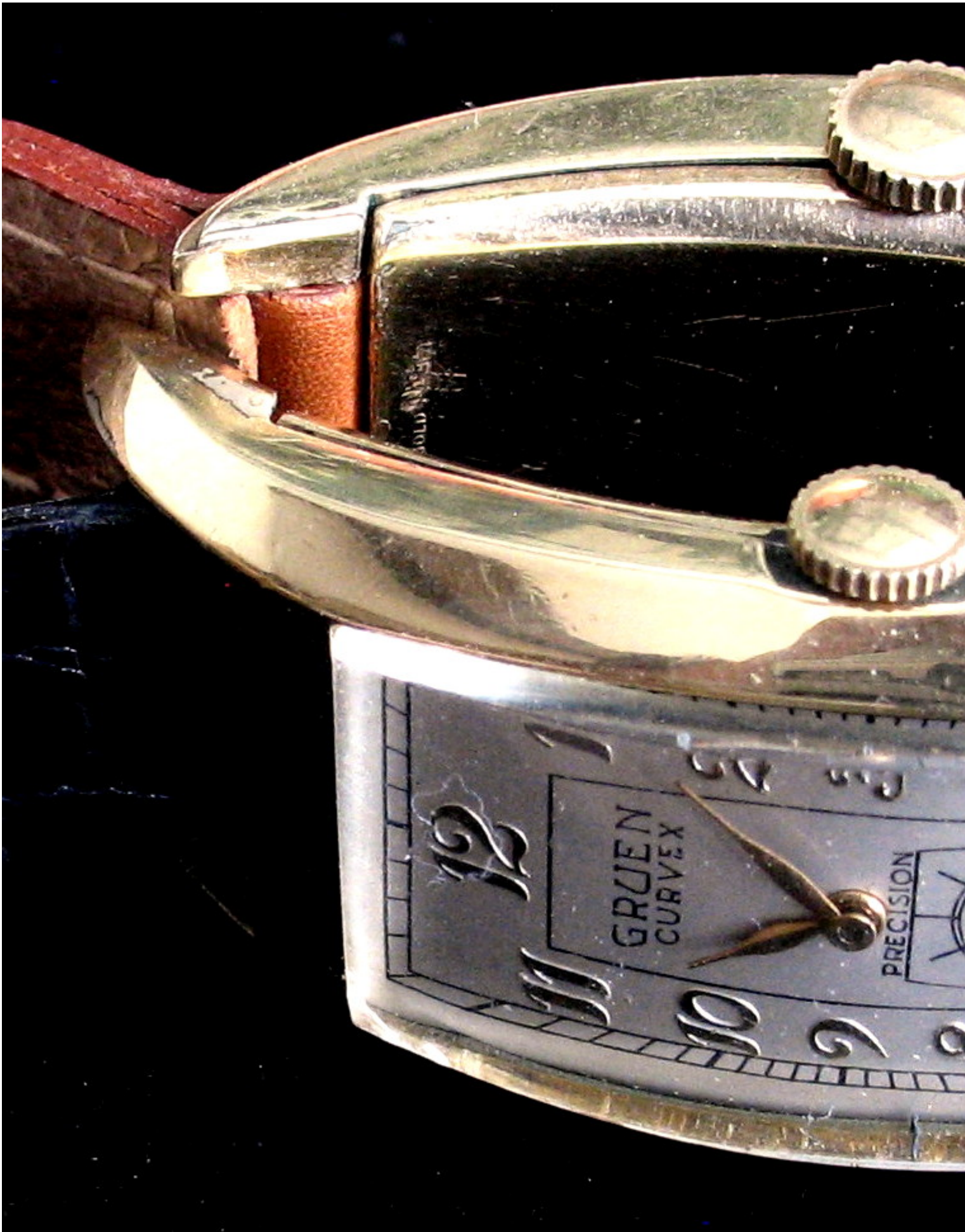
If so I like it better than a Majesty.

File Attachments

1) [X147\(9\).jpg](#), downloaded 2193 times



2) [IMG_1419ax.jpg](#), downloaded 2183 times



Subject: Re: Curvex Majesty (330)
Posted by [Thojil](#) on Tue, 11 Jun 2013 09:04:41 GMT
[View Forum Message](#) <> [Reply to Message](#)

The cases look very similar, but the Majesty is 2mm longer than the Peer. Also you can tell from the style numbers (Majesty = 292 and Peer = 295) that the bezel and as a result the crystal size is also different.

Subject: Re: Curvex Majesty (330)
Posted by [Thojil](#) on Tue, 11 Jun 2013 09:07:36 GMT
[View Forum Message](#) <> [Reply to Message](#)

Cary, what is the 311 referring to in the title? If it is the movement you may want to correct it...

Subject: Re: Curvex Majesty (330)
Posted by [artbissell](#) on Tue, 11 Jun 2013 20:29:39 GMT
[View Forum Message](#) <> [Reply to Message](#)

I really appreciate the efforts my confusion about this 52mm, by my measurement, Peer has prompted. I really do not care if a Majesty or Peer. I do not like long cases sized by lug length. For a longest Gruen I have the cheap? 15j flat movement 500 in the 501 long narrow curved case that seems longest I guess because of short lugs and narrow width.

Notice I made spotty dial look better with minor photo adjustments. I will henceforth not waste time here looking for w.w.model names and be satisfied with case numbers like this one 501/296.. Although slightly different cases have same case numbers?

File Attachments

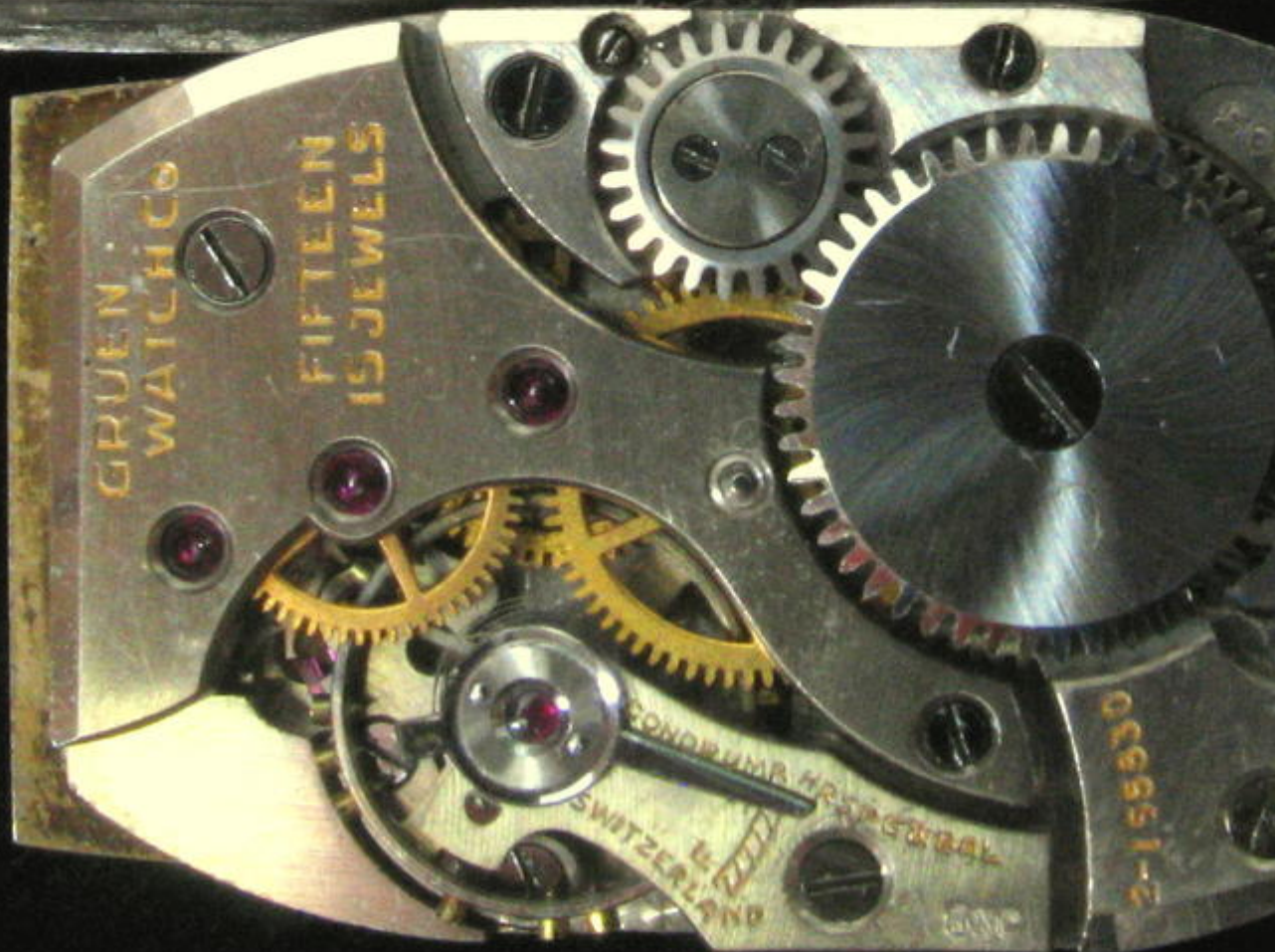
1) [IMG_1413a-33x.jpg](#), downloaded 2297 times



2) [IMG_8757aa.jpg](#), downloaded 2111 times



3) [IMG_8758acopy.jpg](#), downloaded 2044 times



Subject: Re: Curvex Majesty (330)
Posted by [C. Hurt](#) on Wed, 19 Jun 2013 17:39:40 GMT
[View Forum Message](#) <> [Reply to Message](#)

Thojil wrote on Tue, 11 June 2013 04:07Cary, what is the 311 referring to in the title? If it is the movement you may want to correct it....

Thanks for that. I was trying to distinguish between the 330 and 370 versions of the Majesty. I've changed the title, but perhaps a mod (Jack?) can change it in the replies.

Thanks again,

Cary

Subject: Re: Curvex Majesty (330)
Posted by [Jenneke](#) on Wed, 19 Jun 2013 20:11:44 GMT
[View Forum Message](#) <> [Reply to Message](#)

Done. Changed 311 to 330.
