
Subject: Curvex Ace

Posted by [Gary](#) on Thu, 07 Sep 2017 01:44:51 GMT

[View Forum Message](#) <> [Reply to Message](#)

Model name : Ace

Type : manual

Period/date 1935

Gender : Ladies/Gents

Case Maker : Gruen

Case Material : 14k gf

Case Serial : 2379900

Case Style no : 202

Caliber : 311 , 17j

Movement Maker : Gruen Precision

Movement Serial: 352300

Bracelet : Leather

Other info : First year for the Curvex. Odd the 00 endings of the case and movement serial. 352300 almost sounds like this was a 1935 movement batch 2300. The inscription is hard to read and I cannot make out what it says. The number is a mystery too.

Rant info: I should kick myself for getting this posted months after I acquired it. I need to get back to my Gruen watches!

Enjoy!

File Attachments

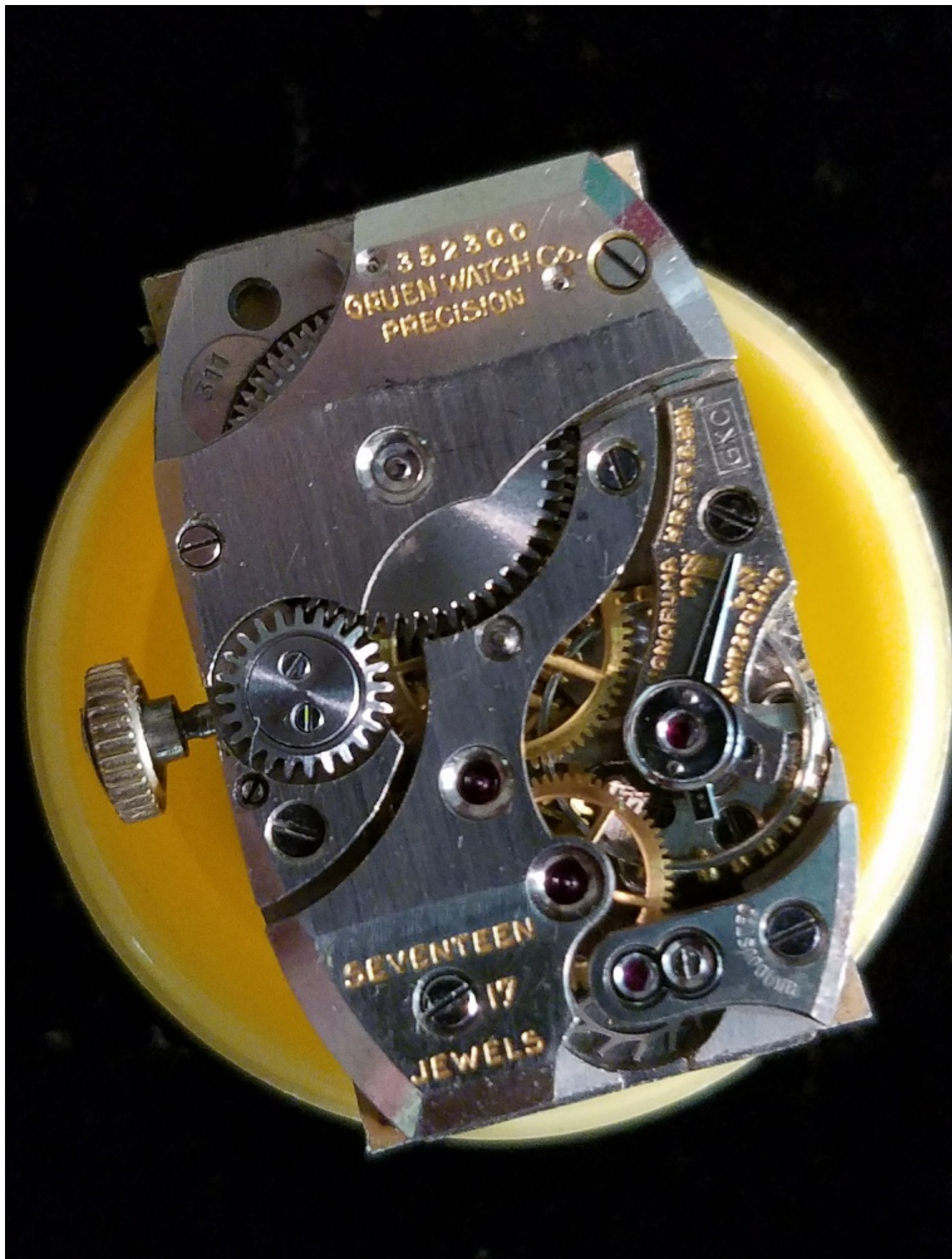
1) [20170906_163618_resized.jpg](#), downloaded 1973 times



2) [20170906_163931_resized_1.jpg](#), downloaded 1805 times



3) [20170906_164908_resized.jpg](#), downloaded 1792 times



352300
GRUEN WATCH CO.
PRECISION

377

GWC

GRUEN WATCH CO.
SWITZERLAND

SEVENTEEN
17
JEWELS

4) [20170906_172622_resized.jpg](#), downloaded 1811 times

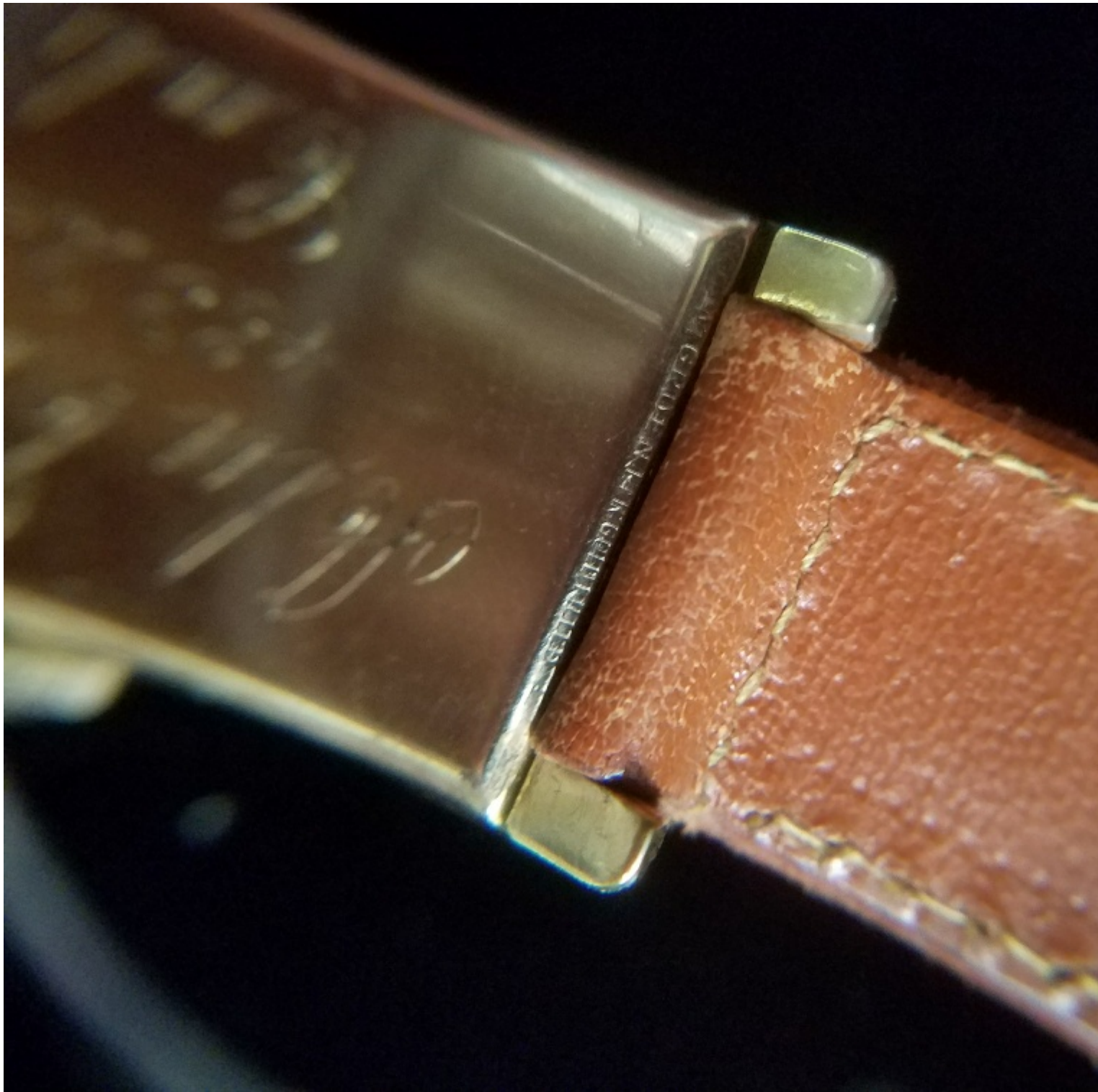


W. & A. G. & Co.
GRAND & FINE JEWELLERS
THE GREAT WATCHES
2379900

5) [20170906_173450_resized_1.jpg](#), downloaded 1810 times



6) [20170906_173608_resized.jpg](#), downloaded 1778 times



7) [20170906_164356_resized.jpg](#), downloaded 1761 times



Subject: Re: Curvex Royal

Posted by [Barney Green](#) on Thu, 07 Sep 2017 08:24:25 GMT

[View Forum Message](#) <> [Reply to Message](#)

I'd say it reads Ala Co Calif which could stand for Alameda County California. 483239 could be an inventory number?

Anyway, nice early Curvex!

Subject: Re: Curvex Royal

Posted by [JackW](#) on Thu, 07 Sep 2017 15:22:34 GMT

[View Forum Message](#) <> [Reply to Message](#)

Nice! Your guesses are as good as mine on what it says on the back; Bernd though seems to have it.

btw, Gary... in typing out the case serial, you inverted numbers.

This is the second lowest movement serial for a 311 I've seen. The other one is 352155 which was in a case marked with an Oct, 1935 date. That case # is 2367277. Pretty darn close on both counts to make your's just as early and likely in the first run of the cal 311.
