
Subject: Pan American Captain

Posted by [abacus](#) on Thu, 02 Feb 2017 04:31:49 GMT

[View Forum Message](#) <> [Reply to Message](#)

Model name :Captain

Type :Pan American

Period/date :1940's

Gender :Gents

Case Maker :Wadsworth

Case Material :14K SG

Case Serial :G649000

Case Style no :534

Caliber :420SS

Movement Maker :Gruen

Movement Serial:

Bracelet :

Other info :

Hello,

New guy here....I have Granddad's watch, just wondering a bit about it if anybody can help on year, value, etc.

Thanks in advance for any help!

Photo's uploaded.

Various info obtained so far:

fancy lugs.

On the Face:

Gruen Veri-Thin, Precision, (has a 24 hour face).

Back of Case:

Outside: Gruen, W 14K GOLD"

Inside: Wadsworth, G649000, 420 534, SS.

On Movement: GRUEN WATCH CO, SEVENTEEN JEWELS - 17, 420 SS, UNADJUSTED, (serial number i think, underneath and partly obscured by brass gear) 1A__2411 or 14__2411.

On or by mainspring cover (i think)-- VERI-THIN, PATENTED.

By "F S" lever: SWITZERLAND, GXC

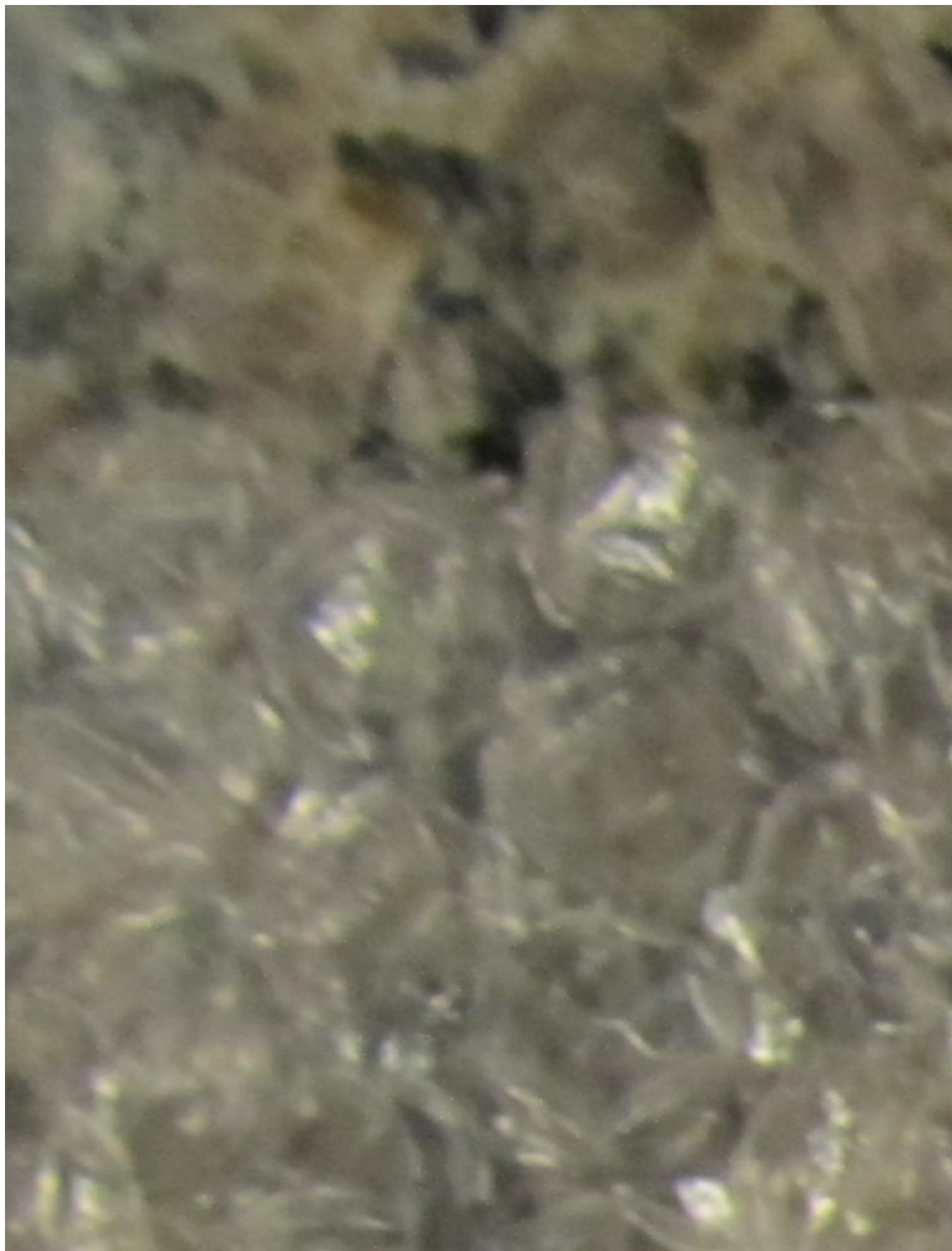
On the Gold Watch Band:

GRUEN 14K GOLD, MADE IN USA, PAT PENDING.

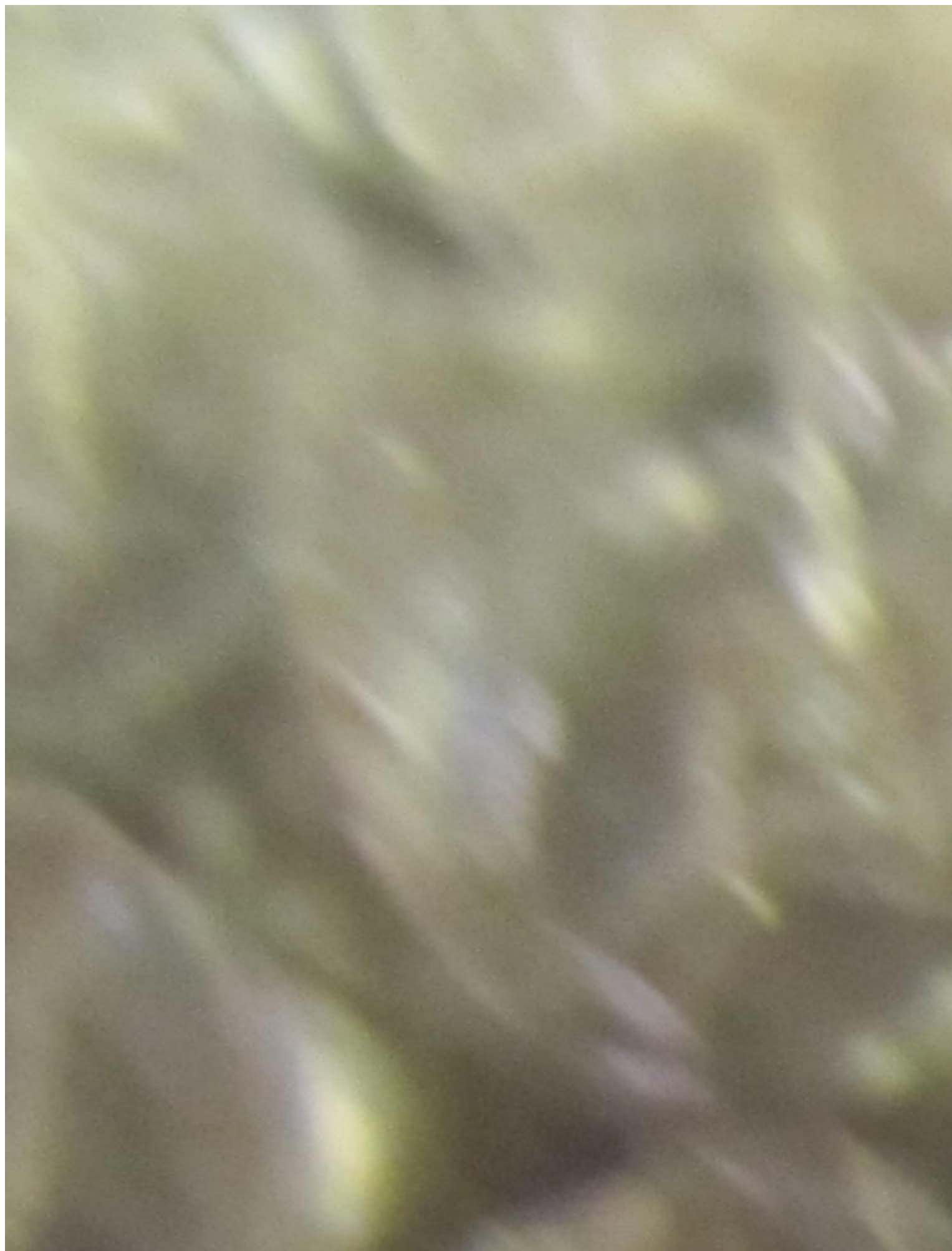
Again, thanks for any help.

File Attachments

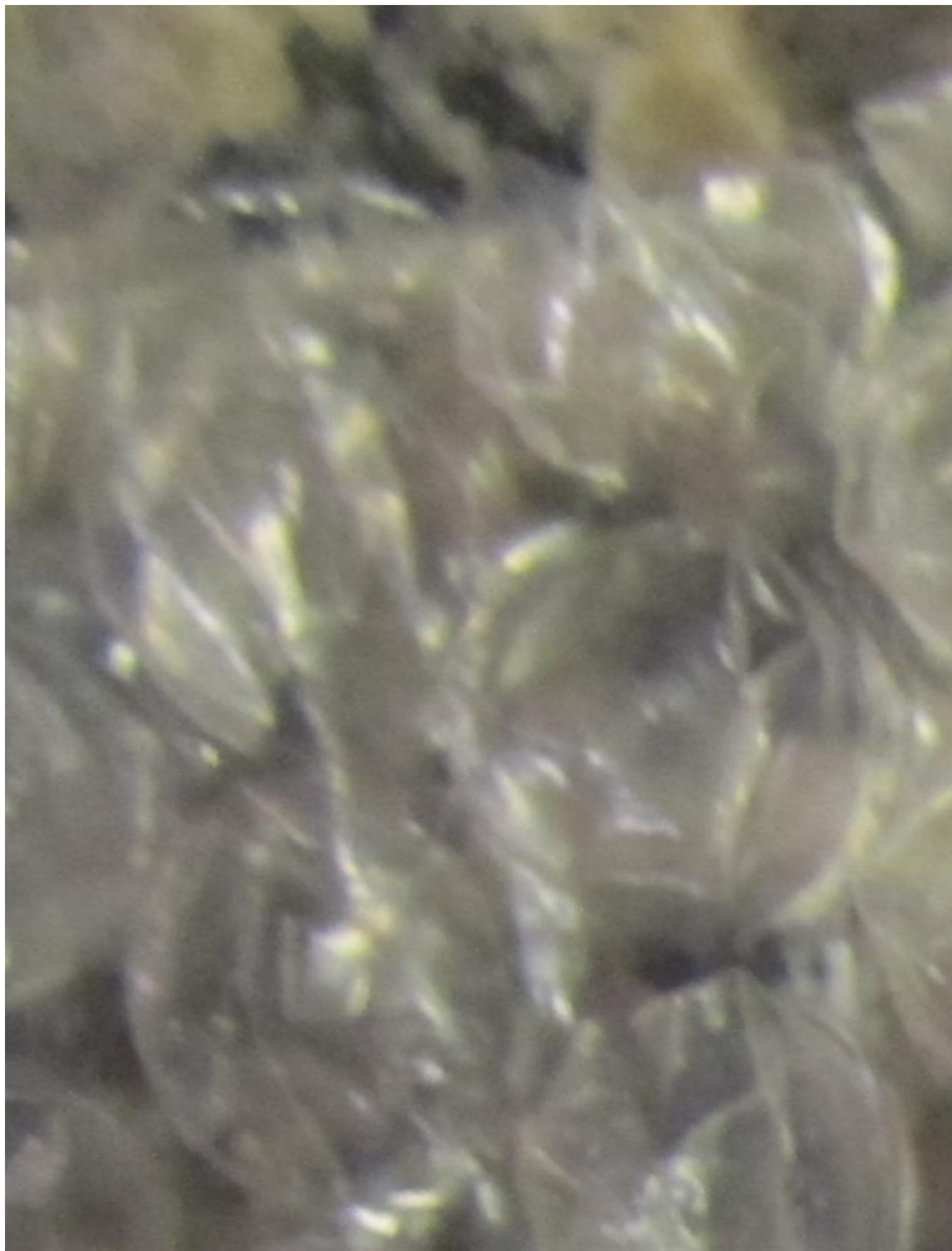
1) [IMG_3263.JPG](#), downloaded 2543 times



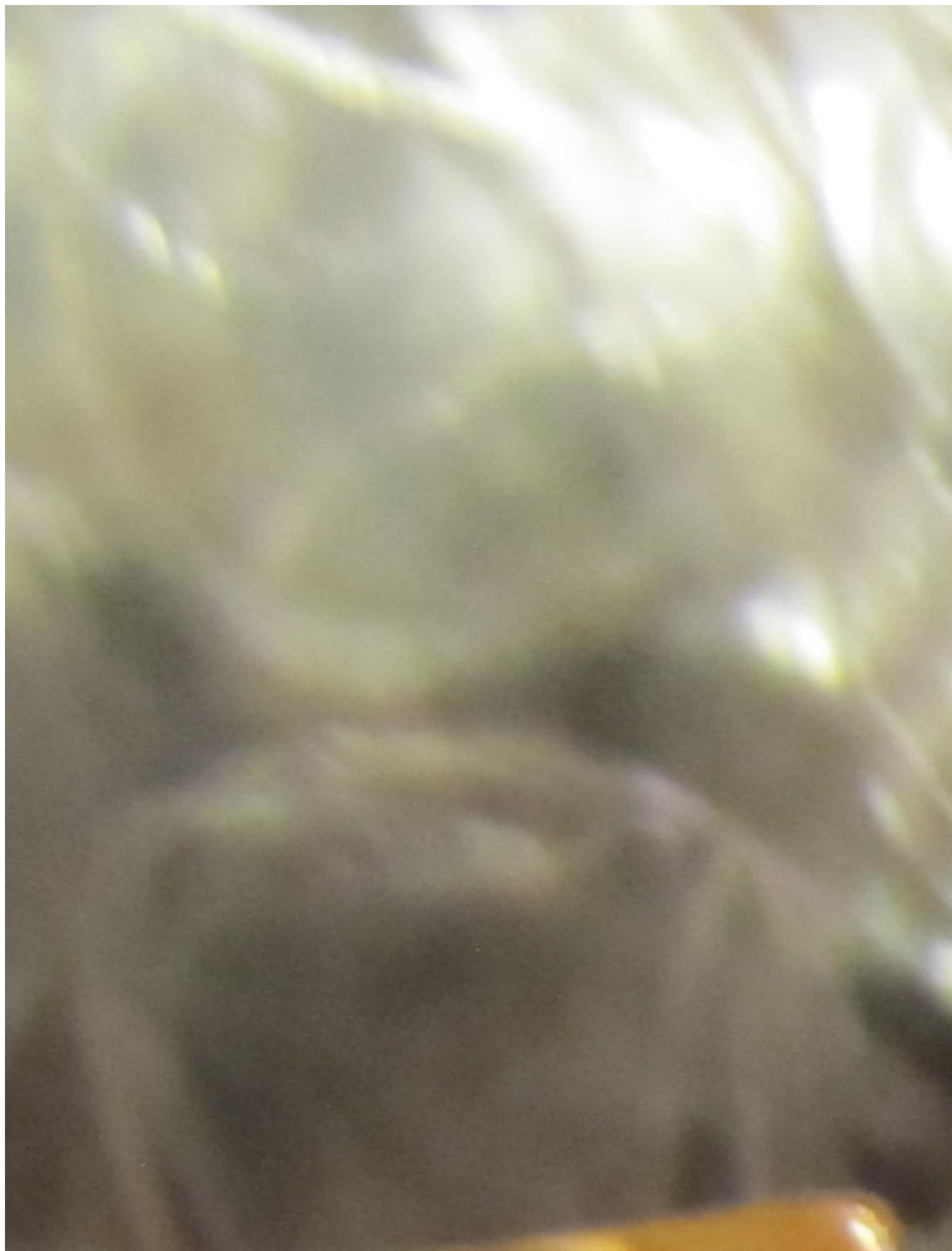
2) [IMG_3264.JPG](#), downloaded 2511 times



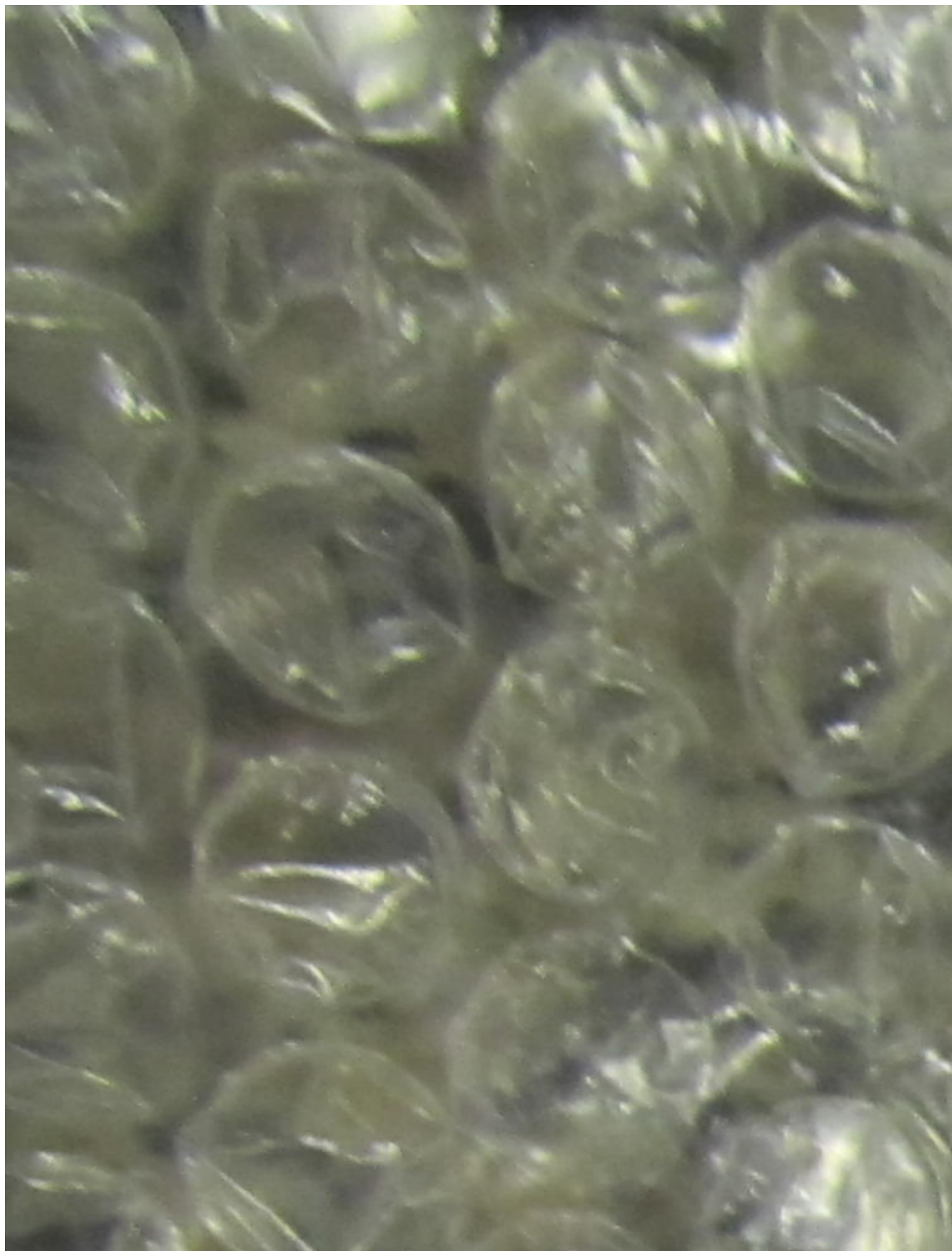
3) [IMG_3265.JPG](#), downloaded 2520 times



4) [IMG_3266.JPG](#), downloaded 2526 times



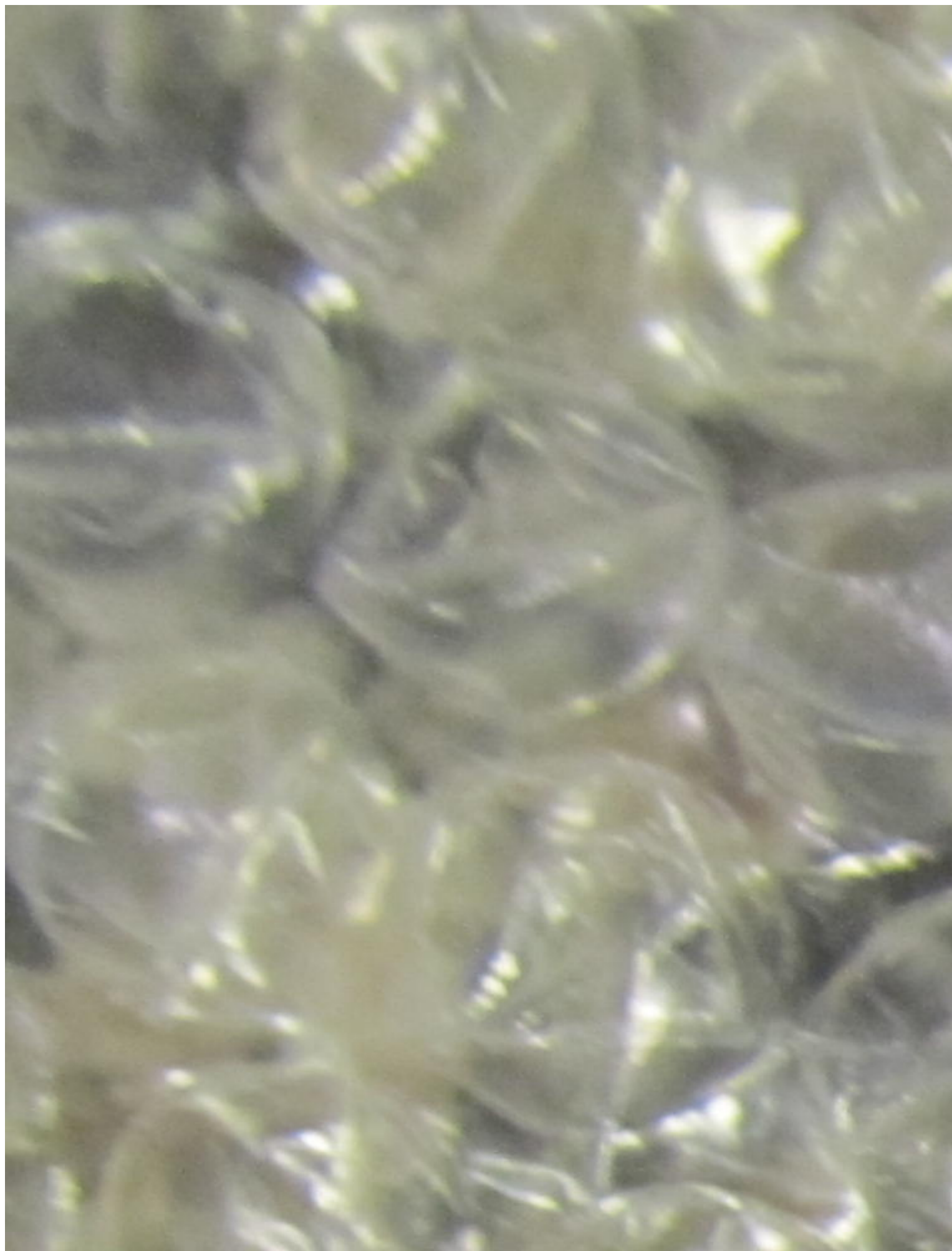
5) [IMG_3267.JPG](#), downloaded 2516 times



6) [IMG_3268.JPG](#), downloaded 2504 times



7) [IMG_3269.JPG](#), downloaded 2520 times



8) [IMG_3270.JPG](#), downloaded 2521 times



Subject: Re: Please Help Identify Gruen Veri-Thin
Posted by [Gary](#) on Thu, 02 Feb 2017 20:37:48 GMT
[View Forum Message](#) <> [Reply to Message](#)

Welcome to the forum Mike!

I'd say you have a 1946 Pan American Ace. Gruen began advertising the Pan AM in 1943 for The Pan American

"Clipper" flying boats. Never see a solid gold band from Gruen like that.

You got a keeper for sure!

Edit: Oh BTW value? Priceless considering it was your grandpa's watch!

Subject: Re: Please Help Identify Gruen Veri-Thin
Posted by [Barney Green](#) on Thu, 02 Feb 2017 20:56:40 GMT
[View Forum Message](#) <> [Reply to Message](#)

Hi,

first of all welcome to this nice forum. I am not the expert of mens Gruens, but I think what you have there is a very nice example of a late 1945 Pan-American Captain with a strap which seems to be original. Everything solid gold. this is a highly sought after model if I am correct in IDing it. It did originally cost about \$120 without the golden strap. What is it worth today? I guess at least ten times the money...

Subject: Re: Please Help Identify Gruen Veri-Thin
Posted by [Barney Green](#) on Thu, 02 Feb 2017 20:57:45 GMT
[View Forum Message](#) <> [Reply to Message](#)

Ah, Gary was faster in typing...
So, Ace or Captain? As I said, I am not the expert.

Subject: Re: Please Help Identify Gruen Veri-Thin
Posted by [Gary](#) on Thu, 02 Feb 2017 21:07:57 GMT
[View Forum Message](#) <> [Reply to Message](#)

Barney Green wrote on Thu, 02 February 2017 20:57Ah, Gary was faster in typing...
So, Ace or Captain? As I said, I am not the expert.
My mistake. Barney is correct, a Pan American Captain. He is now an expert, I've now been demoted to a novice. ;-)

Subject: Re: Please Help Identify Gruen Veri-Thin
Posted by [timeliz](#) on Thu, 02 Feb 2017 21:32:13 GMT
[View Forum Message](#) <> [Reply to Message](#)

Welcome to the forum, Abacus!
You have an awesome watch.
I am absolutely salivating over that very rare gold band.
Thanks for sharing your treasure.

Subject: Re: Please Help Identify Gruen Veri-Thin
Posted by [kastner](#) on Fri, 03 Feb 2017 02:25:12 GMT
[View Forum Message](#) <> [Reply to Message](#)

That's a wonderful watch Abacus, and even better with the family connection. I have one too, with SN G649371. I also own a yellow gold version with SN G592073

Captain? I've always thought that this was an Ace. Paul thinks so at <http://www.pixelp.com/gruen/1945.html>

What is the difference between them?

Subject: Re: Please Help Identify Gruen Veri-Thin
Posted by [Gary](#) on Fri, 03 Feb 2017 03:41:49 GMT
[View Forum Message](#) <> [Reply to Message](#)

kastner wrote on Fri, 03 February 2017 02:25Captain? I've always thought that this was an Ace. Paul thinks so at <http://www.pixelp.com/gruen/1945.html>

What is the difference between them?
I think this ad confirms it.

Subject: Re: Please Help Identify Gruen Veri-Thin
Posted by [Barney Green](#) on Fri, 03 Feb 2017 07:33:13 GMT
[View Forum Message](#) <> [Reply to Message](#)

It's a) the different lugs and b) the solid gold material which makes it a Captain...

Subject: Re: Please Help Identify Gruen Veri-Thin
Posted by [kastner](#) on Fri, 03 Feb 2017 15:30:43 GMT

[View Forum Message](#) <> [Reply to Message](#)

Thank you Barney and Gary, I stand corrected. These are Captains. I can't believe that I hadn't seen that ad before....

Subject: Re: Please Help Identify Gruen Veri-Thin
Posted by [JackW](#) on Fri, 03 Feb 2017 23:00:57 GMT
[View Forum Message](#) <> [Reply to Message](#)

Hi,

Nice watch! Can't disagree with what has already been said above. Although this is the second time I've seen a Captain with the gold band. It went on eBay for over \$1000; way beyond what I could afford.

The Ace also came in solid gold but these are pretty rare.... The Captain and the Swiss-cased solid gold are more common. The Captain is seen on eBay less often than the Swiss cased Pan Am. Same at shows too in my experience.

Do you know the year the watch was purchased? If you can provide serial numbers on the case and the movement we can see how it fits in with the others from Gruen that came with the 420 movement and a Wadsworth case.

Here is an example in the ID'd forums...http://vintagegruen.org/vgforum/index.php?t=msg&th=73&goto=302&#msg_302

Subject: Re: Please Help Identify Gruen Veri-Thin
Posted by [abacus](#) on Sat, 04 Feb 2017 16:38:39 GMT
[View Forum Message](#) <> [Reply to Message](#)

Hello All,
First, thank you all for your time, expertise and efforts! I really appreciate it!

JackW,
I do not know when Granddad bought this, but 1945 would make sense as he could have been celebrating that both of his sons survived the war (my dad a LT CMDR on a destroyer, north atlantic, Normandy-Omaha Beach, my uncle a AF pilot).
As far as numbers:

Back of Case:
Outside: Gruen, W 14K GOLD"
Inside: Wadsworth, G649000, 420 534, SS.

On Movement: GRUEN WATCH CO, SEVENTEEN JEWELS - 17, 420 SS, UNADJUSTED,
(serial number i think, underneath and partly obscured by brass gear)1A__2411 or 14__2411.

I'm planning to have this watch serviced and cleaned, any recommendations on a craftsman? I'm located in the Pacific Northwest.
Thanks for the Help!

Subject: Re: Please Help Identify Gruen Veri-Thin
Posted by [JackW](#) on Sun, 05 Feb 2017 16:49:50 GMT
[View Forum Message](#) <> [Reply to Message](#)

Thank you abacus!

Gary should know someone in that corner of the US to do the service.

Subject: Re: Please Help Identify Gruen Veri-Thin
Posted by [Gary](#) on Sun, 05 Feb 2017 19:18:59 GMT
[View Forum Message](#) <> [Reply to Message](#)

JackW wrote on Sun, 05 February 2017 16:49 Thank you abacus!

Gary should know someone in that corner of the US to do the service.
We have Renaissance Watch Repair in Bellevue which does great service and has a good guarantee.

I've also sent my non Gruen repairs out of town to The Watch Tech. His prices are very reasonable and does great service.

Subject: Re: Please Help Identify Gruen Veri-Thin
Posted by [JackW](#) on Sat, 19 Jan 2019 02:37:30 GMT
[View Forum Message](#) <> [Reply to Message](#)

Well, since there is a Pan American Captain already in the 1940s group, I'll add to this one. Too bad that Abacus has never been back to give an update on the restoration of his grandfather's watch. Pretty darn cool watch.

Here is mine that I received in trade for work on another person's group of watches. It came with an obvious redial and incorrect hands. Out of serendipity, an uncased movement and an nearly NOS dial for a Captain was listed on eBay last August. Seller told me the case had been scraped.
:roll: :cry:

So here is my entry:

Model name: Captain
Type: Pan American

Period/date: 1940's

Gender: men

Case Maker: Wadsworth

Case Material: 14K yellow gold

Case Serial: G648719

Case Style no: 534

Caliber: 420SS

Movement Maker: Gruen

Movement Serial: A473929

Bracelet: Modern leather strap; made in Germany.

Other info:

File Attachments

1) [14k mark.JPG](#), downloaded 1989 times



2) [case back inside.jpg](#), downloaded 1994 times



3) [movement.jpg](#), downloaded 1970 times



4) [as received_sm.jpg](#), downloaded 1975 times



5) [on Bench_sm.jpg](#), downloaded 1986 times



Subject: Re: Please Help Identify Gruen Veri-Thin

Posted by [timeliz](#) on Sat, 19 Jan 2019 03:57:19 GMT

[View Forum Message](#) <> [Reply to Message](#)

That looks AWESOME, Jack!

Subject: Re: Please Help Identify Gruen Veri-Thin

Posted by [mikey](#) on Mon, 21 Jan 2019 00:41:44 GMT

[View Forum Message](#) <> [Reply to Message](#)

That dial is really nice!

Subject: Re: Please Help Identify Gruen Veri-Thin

Posted by [JackW](#) on Mon, 21 Jan 2019 03:07:23 GMT

[View Forum Message](#) <> [Reply to Message](#)

Thanks Liz and Mikey.
