

---

Subject: Curvex Ace

Posted by [Gary](#) on Thu, 07 Sep 2017 01:44:51 GMT

[View Forum Message](#) <> [Reply to Message](#)

---

Model name : Ace

Type : manual

Period/date 1935

Gender : Ladies/Gents

Case Maker : Gruen

Case Material : 14k gf

Case Serial : 2379900

Case Style no : 202

Caliber : 311 , 17j

Movement Maker : Gruen Precision

Movement Serial: 352300

Bracelet : Leather

Other info : First year for the Curvex. Odd the 00 endings of the case and movement serial. 352300 almost sounds like this was a 1935 movement batch 2300. The inscription is hard to read and I cannot make out what it says. The number is a mystery too.

Rant info: I should kick myself for getting this posted months after I acquired it. I need to get back to my Gruen watches!

Enjoy!

---

## File Attachments

1) [20170906\\_163618\\_resized.jpg](#), downloaded 2901 times



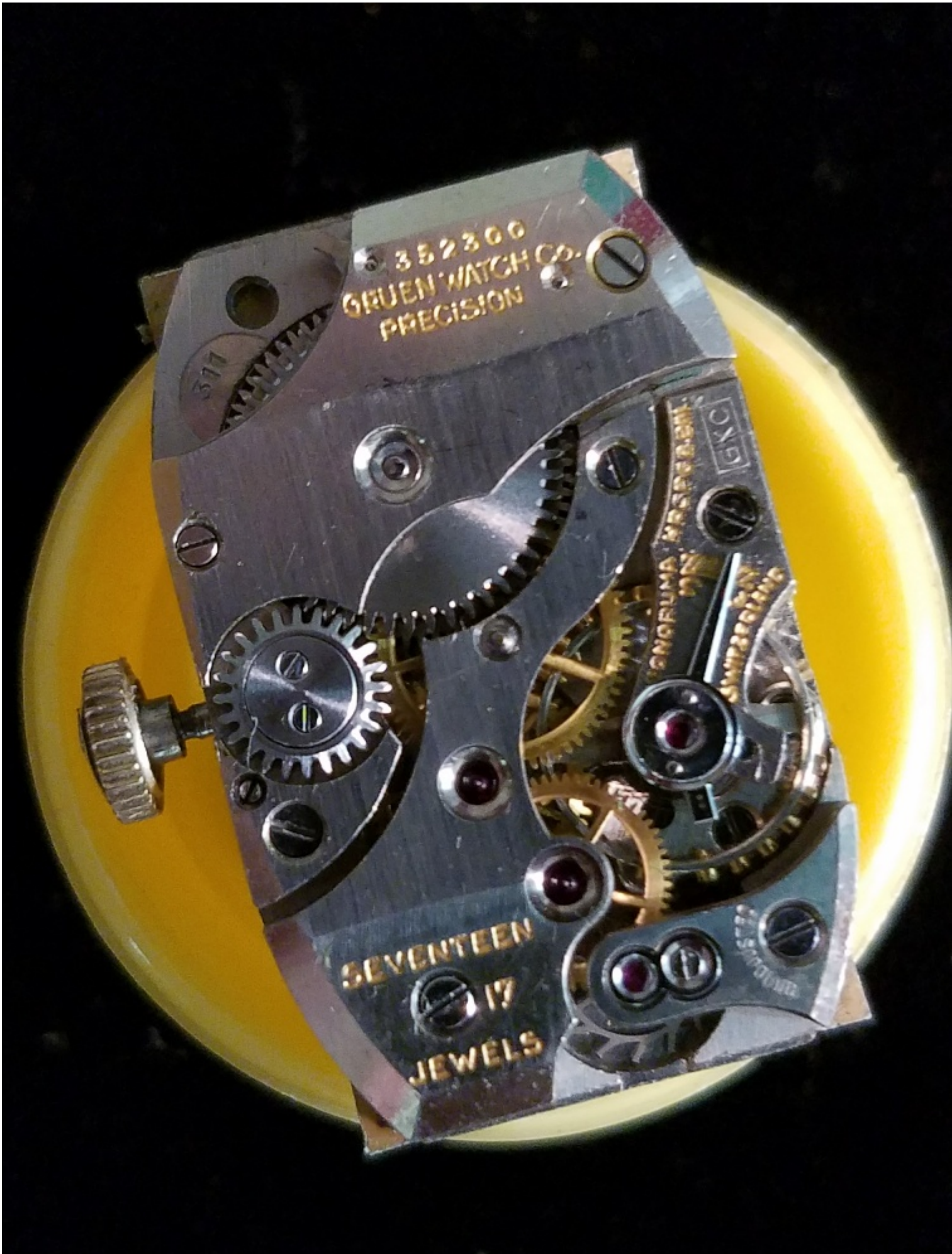
GRUEN  
CURVEX

PRECISION

2) [20170906\\_163931\\_resized\\_1.jpg](#), downloaded 2688 times



3) [20170906\\_164908\\_resized.jpg](#), downloaded 2666 times



352300  
GRUEN WATCH CO.  
PRECISION

377

GWC

GRUEN'S PATENT

SEVENTEEN  
17  
JEWELS

GRUEN'S PATENT

4) [20170906\\_172622\\_resized.jpg](#), downloaded 2695 times

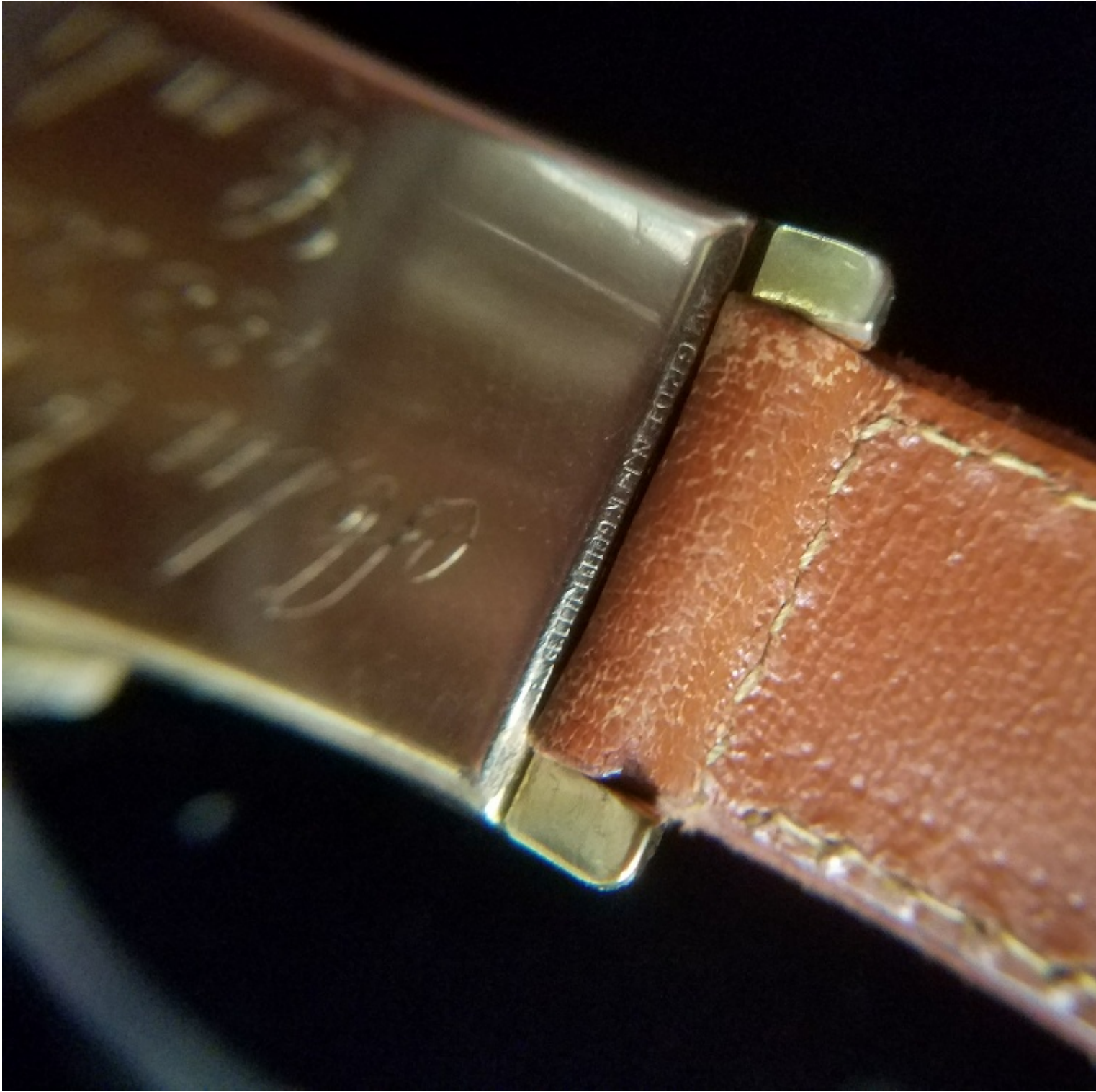


W. B. CASHE & JEWELRY CO.  
THE GREEN WATCH CO.  
292  
2379900

5) [20170906\\_173450\\_resized\\_1.jpg](#), downloaded 2705 times



6) [20170906\\_173608\\_resized.jpg](#), downloaded 2655 times



7) [20170906\\_164356\\_resized.jpg](#), downloaded 2630 times



GRUEN  
CURVEX

PRECISION

12  
11  
10  
9  
8  
7  
2  
3  
4  
5