

---

Subject: WTB jewels 756

Posted by [Jenneke](#) on Sat, 08 Jan 2022 22:34:17 GMT

[View Forum Message](#) <> [Reply to Message](#)

---

I have two broken jewels in my seventeen jewels semi thin 756. I could try to locate a spare, but... learning how to replace jewels would be nice too.

So, I am looking for the two jewels for the center wheel. The capped one in the center bridge and the one in the main plate. Not sure if these were sold as spares by Gruen.

The chaton jewel only has one crack.

This is the movement:

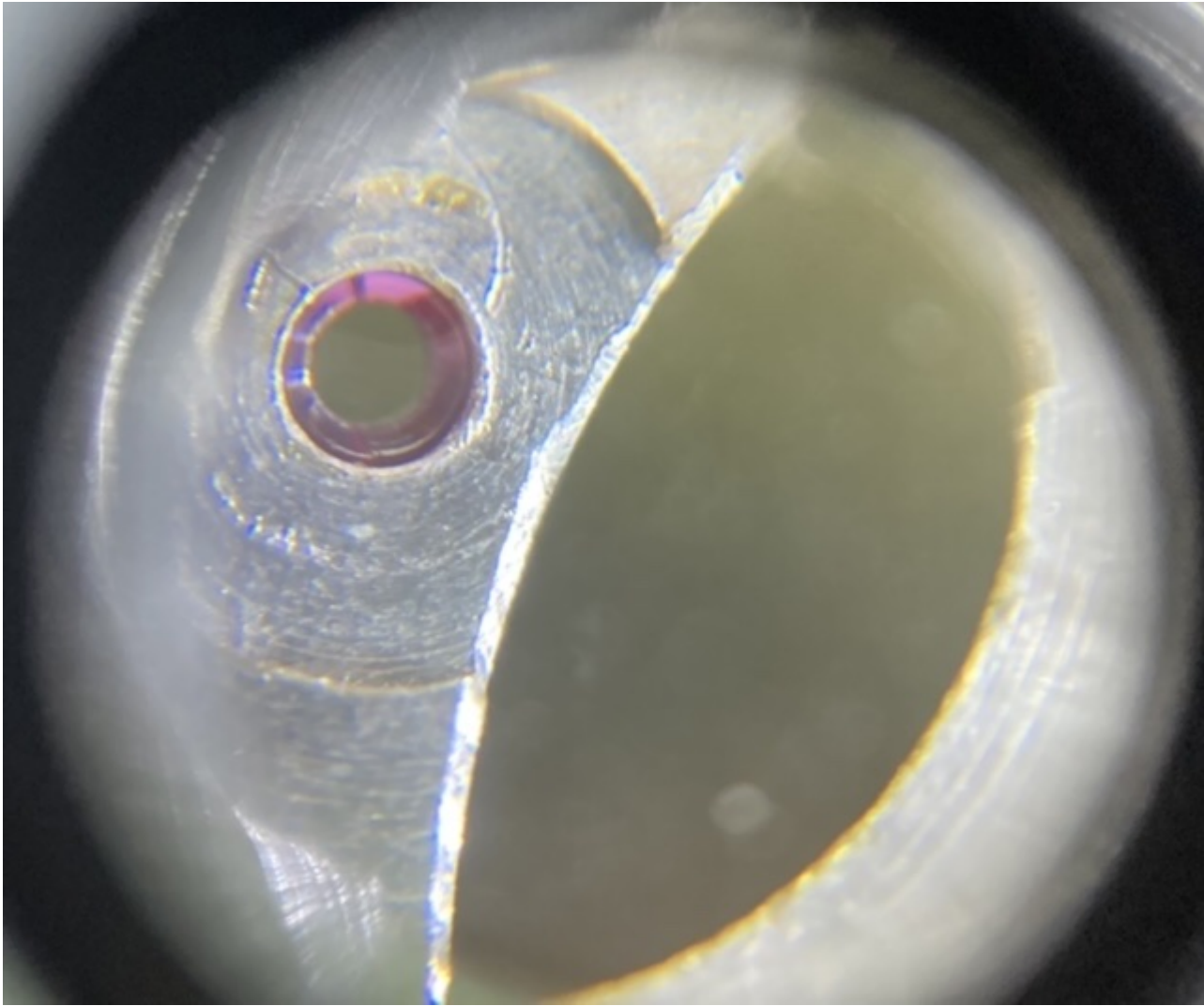
#### File Attachments

---

1) [2DE3E939-6F0D-4112-A08C-B93606A5FCAF.jpeg](#), downloaded 2325 times



2) [02EDCC4A-4059-4C48-8B7E-CA82C9B67861.jpeg](#), downloaded 2284 times



3) [35379353-B348-4EF4-953C-AB8A24396CF3.jpeg](#), downloaded 2230 times

