
Subject: Quadron service box

Posted by [Thojil](#) on Sat, 26 Dec 2020 20:33:38 GMT

[View Forum Message](#) <> [Reply to Message](#)

Description

Two-tone hinged wooden box. The lid is covered in dark red fake leather with an Art-Deco style gold embossed emblem. The main body of the box is covered in brown fake leather material with gold printed borders.

Inside the lid has off-white silk, showing text "Gruen Quadron", the Gruen crest and "17 Jewels PRECISION"

The insert holding the watch is missing and I also have no idea what it should look like. Please add a picture if anybody has the info. I can then get creative like Jenneke and try to reproduce it :lol:

Period : 1925 - 1930?

Watch type : Mens wrist watch

Size : L=13cm W=9cm H =5.5cm

Inventor : Unknown

Patents : Unknown

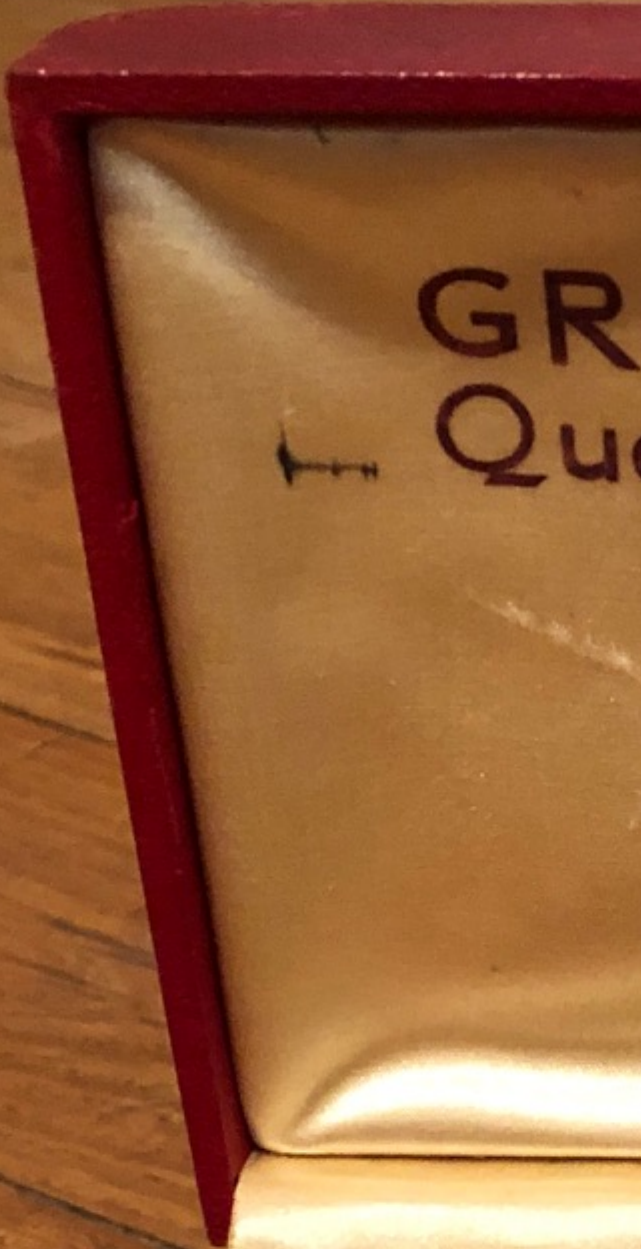
Box maker : Unknown

File Attachments

1) [3DDD8E15-8C80-40D3-B395-87894E3024CA.jpeg](#), downloaded 2910 times



2) [16DDBD43-2741-4EED-AF1B-D64F91DF39A8.jpeg](#), downloaded 2897 times



GR
Qu



3) [ECB64E05-F656-40F4-8F86-E83255010C0D.jpeg](#), downloaded 2915 times

