

---

Subject: Caliber 740 (Premo, WSC, Guild) - 17J & 19J variants

Posted by [Case](#) on Fri, 07 Feb 2020 05:20:33 GMT

[View Forum Message](#) <> [Reply to Message](#)

---

Size: 17L

Jewels: originally 17J, later 19J

Config: open face

Negative setting mechanism

Dial release: side screws

Dial holes: 1 & 6 positions

Maker: unknown (same maker as 750 semi-thin series)

Adjustments: 5

Here is one of the later Guild 19J variants. Stamped 740. Circa 1922. Sn 1104688. Silver dial by Zelim Jacot

Note that the 750 series semis follow this front plate number series—but a back plate sn appears on them by 1121000 (front plate). BUT the back plate # is a different series, not a shortened version of the front plate #. For example, the 758 with front plate # 1121471 bears # 16740 on the back (bridges).

### File Attachments

---

1) [EDC77665-5B97-4C56-AE1F-2A236C30B36D.jpeg](#), downloaded 2373 times



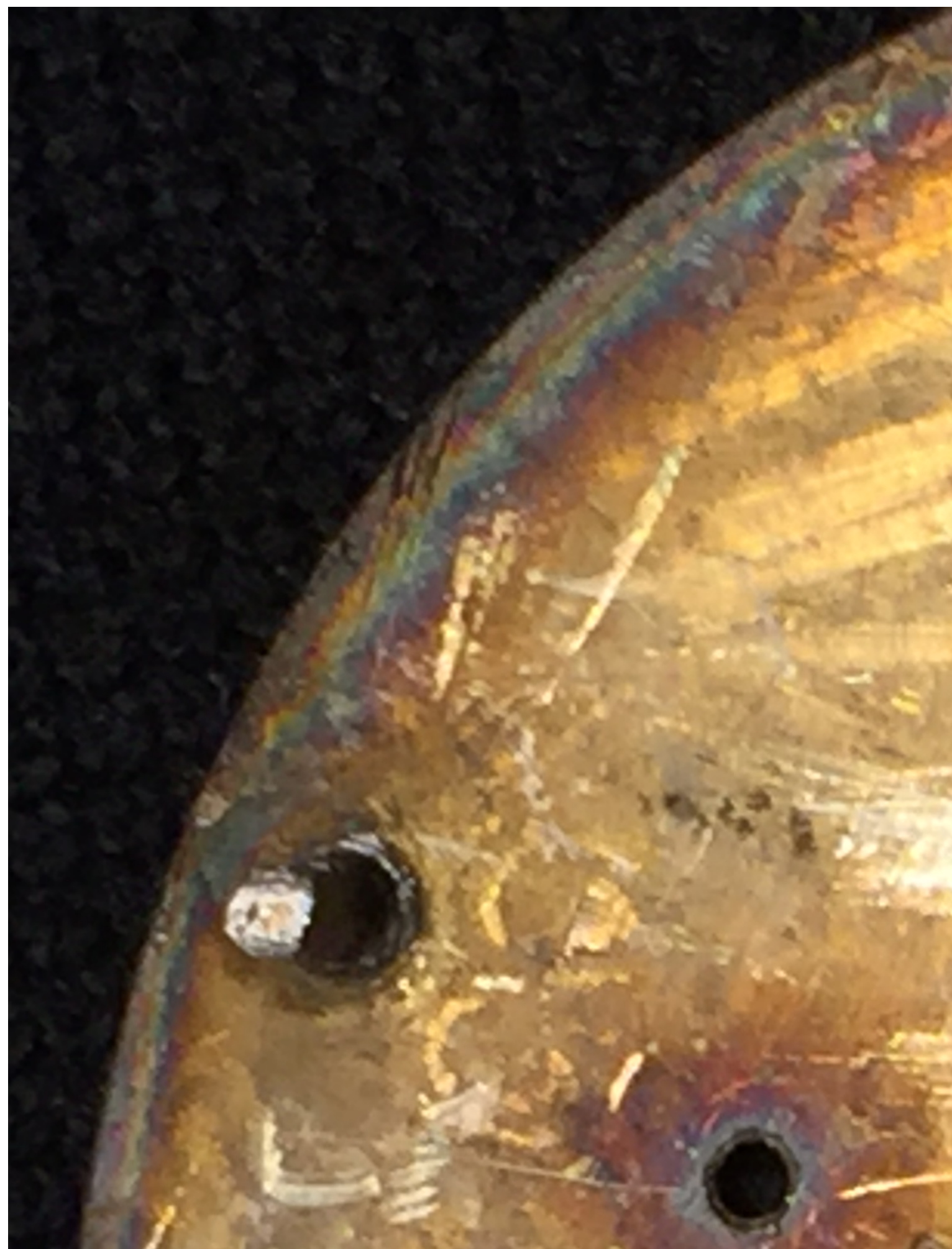
2) [D5A8F2AA-1765-448C-8329-423868747B07.jpeg](#), downloaded 2335 times



3) [20D7BED0-4F44-4092-AA0D-D90B44BCB8B1.jpeg](#), downloaded 2330 times



4) [C87A21CD-7DE5-4A3E-8836-786D3CD224ED.jpeg](#), downloaded 2331 times



5) [B334698D-CA38-42BD-891D-797C517C657E.jpeg](#), downloaded 2333 times

