

---

Subject: Cartouche 379

Posted by [John2019](#) on Fri, 19 Jul 2019 21:10:30 GMT

[View Forum Message](#) <> [Reply to Message](#)

---

Hi,

Best I can see this watch dates from the 1920's although I can't find a match for the case or face. The movement appears to be a Cartouche 1077, 17 Jewel. The case is stamped 18c (assumed white gold) The case serial is 18247. Currently does not run. Any additional information/value estimate would be appreciated.

Model name : Gruen Precision

Type : ???

Period/date : 1920's???

Gender : Ladies

Case Maker :

Case Material : 18c

Case Serial : 18247

Case Style no : ??

Caliber :

Movement Maker :

Movement Serial: 619628

Bracelet :

Other info : [www.gruenwristwatches.com/gruen-guild-era-books.php](http://www.gruenwristwatches.com/gruen-guild-era-books.php)

Cartouche 17 jewel

[Picture Front]

[Picture caseback inside]

[Picture movement]

[Picture ad]

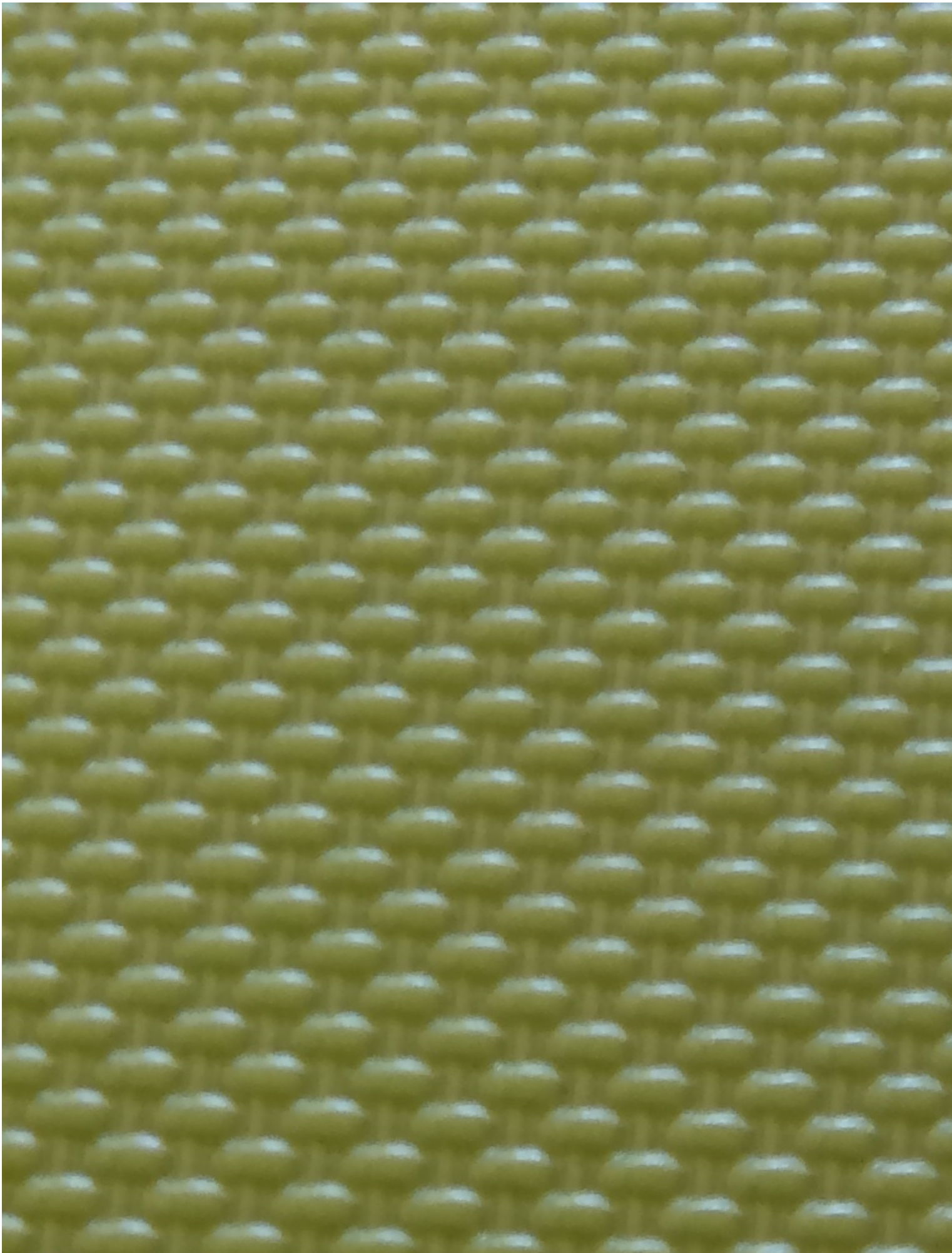
[www.gruenwristwatches.com/gruen-guild-era-books.php](http://www.gruenwristwatches.com/gruen-guild-era-books.php)

For named models, please include a source. This could be a book, an advertisement or an example seen on a website.

## File Attachments

1) [IMG\\_6707.JPG](#), downloaded 2524 times

---



2) [IMG\\_7899.jpg](#), downloaded 2524 times



11

12

1

GRUEN  
PRECISION

10

2

9

3

8

4

7

6

5

3) [IMG\\_7905.jpg](#), downloaded 2470 times



619628



GRUEN  
WATCH  
Co

JEWELS  
SEVENTEEN  
PRECISION  
SWITZERLAND

47